

City of Dover

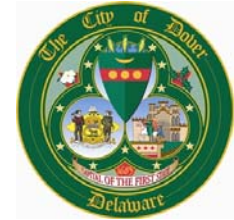
Recreation Needs Assessment



Recommended for approval by
the Parks, Recreation and
Community Enhancement
Committee on August 10, 2015

Approved by City Council on
August 24, 2015





City of Dover Recreation Needs Assessment

Purpose of the Assessment

The *City of Dover 2015 Recreation Needs Assessment* is intended as a way to assess and prioritize what Dover residents have articulated as their outdoor recreation needs. The *Recreation Needs Assessment* will guide the City as we make investments in our park systems to ensure that capital investments support the articulated needs of the community. Public dollars are stretched thin, and as stewards of public land and public dollars, the City needs to ensure that the limited funds are invested in a way that best meet the needs of Dover's diverse community. Through looking at the locations of parks in relation to population and the articulated needs of residents and park users, the City can ensure that we continue to offer a quality system of parks and variety of recreation programs in an effective and efficient manner.



Parks and Recreation Services

The City of Dover Parks and Recreation Department provides a comprehensive recreational program to meet the needs of all citizens, along with a citywide park system. Programming includes special events such as the Spring/Summer Performing Arts Series, Dover Days, Youth Government Day, fitness and enrichment programs, and athletic programs/leagues. The City's athletic programs and leagues encompass softball, basketball, women's lacrosse, soccer, field hockey, volleyball, and football.

The City operates twenty-seven (27) City parks, ranging from passive planted areas to community playgrounds to larger regional parks. A full listing of City Parks and their amenities is provided in Appendix A.

While the City is a municipal recreation service provider, many of our programs and parks attract visitors from the larger Kent County region. The multi-purpose fields at Schutte Park provide a home for regional soccer and girls lacrosse programs. Silver Lake Park has served as home to many charity 5K run/walk events that draw from the larger region. Continuing to function as a regional provider while focusing primarily on addressing the recreation needs and priorities for Dover residents is important for the Parks and Recreation Department.

City of Dover Recreation Needs Assessment



Providing quality affordable recreation and leisure services that promote healthy lifestyles for residents of Dover and its surrounding communities continues to be the goal of our staff. Our sports programming consists of sports leagues, clinics, and conditioning clinics. Basketball, field hockey, lacrosse, volleyball, softball, and tennis are the most popular leagues and sports that we offer throughout the year. Fitness classes employing today's most popular fitness routines take shape in the John W. Pitts Recreation Center and at the Dover Public Library. Leisure time classes are pleasing a variety of ages with card/craft making, cookie decorating, family movies and fun nights. Our line-up of day trips has included fishing on the Delaware Bay, the Philadelphia Flower Show and New York City for the sites and sounds. Most recently, the City has added a number of bicycle programs to promote bicycling and bicycle safety within the City.

These include Bike to Work Day and the Ride of Silence.

Our Youth Connections after school program offers elementary school children a safe haven to receive tutoring, mentoring, life skill development, meet new friends, while feeling safe in the supervised environment. Summer camps held in Schutte Park and on the Delaware State University Campus offer families affordable summer options for the working parent and to give children a fun summer experience with guidance and supervision.

Operationally, the Parks and Recreation Department merged into the Department of Planning & Inspections in 2012 following the retirement of the former Parks and Recreation Director. When this organizational change was implemented, the staff offices were moved from the old recreation center at Dover Park to the John W. Pitts Recreation Center. The use of the Dover Park recreation center had declined over time, especially following the opening of the John W. Pitts Center in 2008. Functionally, the building no longer met the programming needs. Additionally, locating all department staff in one building helped to improve staff safety and the efficiency of the operations.

The Parks and Recreation staff are responsible for the recreation programming and the management of facility reservations and schedules. The Public Works Department, Grounds Division is responsible for maintenance of parks, grounds and fields. Strong collaboration is required between the two departments to ensure that park management is seamless and meets the needs of our visitors and users.

The City of Dover Comprehensive Plan has called for a citywide parks and open space plan since 1996, and while individual park plans have been developed, the City has not completed a system-wide plan. The demolition of the recreation center at Dover Park focused attention of assessing the citywide recreation needs and making capital investments in our parks to meet these identified needs. There was concern raised by the community and members of City

City of Dover Recreation Needs Assessment



Council that the City neglected the needs of residents on the east side of U.S. Route 13 through its park investments in recent years. This concern brought forward the need to fully assess the citywide recreation needs and to make the capital investments in our parks in

accordance with these identified needs.

Our Anchor Parks

Dover Park

Dover Park is located on White Oak Road between U.S. Route 13 and Delaware Route 1. The park is 28.2 acres and while largely wooded, includes softball fields, a playground, pavilions, basketball courts, tennis courts, disc golf, and more. This is also the location of the former recreation center building. The recreation center building was constructed in the 1970's and became functionally obsolete over time. There was some deterioration of the building and water penetration, which ultimately contributed to the decision to demolish the structure. The outdoor amenities are well-utilized, but park patrons have raised the concerns about safety, especially as it relates to the heavily vegetated areas and lighting within the park.

Of the 506 people who completed the City's Recreation Needs Assessment Survey, 42 percent indicated that they use Dover Park. Over 56 percent of the 239 respondents to the question of the purpose of their visit to Dover Park indicated that they use the park for walking or jogging. Other popular activities identified in the response include league activities and playground use.

Schutte Park

Schutte Park functions as a regional athletic center, home to multipurpose fields used for soccer, field hockey, and girls lacrosse; lighted softball fields; and the Dover Little League Park which is leased and managed by the Dover Little League.



City of Dover Recreation Needs Assessment

Schutte Park is also home to the John W. Pitts Recreation Center, the City's indoor recreation center that opened in 2008, which includes a gymnasium and multi-purpose room. This park and the John W. Pitts Recreation Center in particular, serves as the hub for the City's recreation programming.

Of the 506 responses to the City's Recreation Needs Assessment Survey, 68 percent indicated that they visit Schutte Park. The top reason that people indicated that they visit Schutte Park is league play, followed by trail use and playground use. Forty-four percent of the 506 survey respondents indicated that they use the John W. Pitts Recreation Center. Primary purposes for visiting the John W. Pitts Recreation Center includes sports leagues, fitness classes, the walking track, and open gym.

Silver Lake Park

Silver Lake Park is a major recreation area for Dover and Central Delaware. The lake itself provides both passive and active recreational activities for all ages. Activities include fishing, waterskiing, and boating. Most of Silver Lake Park is located below the dam, and therefore along the St. Jones River. This park is a hub of activity for families, joggers, walkers, and many others. The park includes a multi-use path that now connects with the Capital City Trail, a trail system that begins along Park Drive and continues to the intersection of U.S. Route 13 and Public Safety Boulevard. Many regional walk and run events begin and end at Silver Lake Park, bringing in visitors from far beyond Dover. In coordination with DNREC and the Silver Lake Commission, the City has developed plans for a "Silver Lake Revitalization" project. The project is designed to improve water quality of the lake and the St. Jones River by providing buffers to the stream with natural vegetation and to create a management plan for the lake and St. Jones River. This project has resulted in a number of vegetated buffer plantings in Silver Lake Park and in Memorial Park along the St. Jones River.



Concerted efforts of the Silver Lake Commission for bringing awareness and educating younger generations of the value and importance of our watersheds is demonstrated with bi-annual clean up events hosted at Silver Lake Park and Mirror Lake area along Park Drive. Clean up events include soliciting youth from local schools, churches, and organizations such as the Hugh O'Brien Youth group, in addition to inviting the public to bring out their gloves, rakes & shovels. Many of the clean up events have include educational displays presented by DRNEC showing the value of the watershed and its importance. As recently as June 6, 2015, the Spring Clean Up day was held with approximately 60 HOBY youth assisting in the removal of weeds, debris/trash and invasive growth along the Park Drive area. These volunteers also spread several loads of mulch along the selected project area adding to the protection of this waterway. We will continue these efforts, while enhancing our outreach for more involvement

City of Dover Recreation Needs Assessment

and educational components from our partners to garner an increased in community awareness and participation.

Of the 506 respondents to the City's recreation needs assessment survey, 65 percent reported that they visit Silver Lake Park. By far, the top reason for visiting the park (75 percent of 337 respondents) is for walking and jogging. Other popular reasons for visiting Silver Lake Park include picnicking, birdwatching, and fishing.

Neighborhood Parks

In addition to the anchor parks, the many neighborhood parks located throughout Dover provide close-to-home opportunities for residents to enjoy the open space, climb on playground equipment, walk their dogs, or just find some peace and quiet. These parks are a valuable component to the City's park network.



Other Recreation Service Providers

In addition to the parks and recreation programs provided by the City of Dover, other organizations provide a variety of recreation services in and around Dover that help to support the recreation needs of Dover residents. The City of Dover partners with some of these other providers to help coordinate resources in an efficient and effective way.

Kent County Parks and Recreation

While Kent County does not operate parks inside the City of Dover, there are several parks that are near the City boundary and serve City residents. Brecknock Park is located just south of Rodney Village in Camden and offers a variety of facilities, including a large playground, horseshoe pits, a picnic pavilion, ballfields, and a walking trail. Kent County is also constructing a new park and recreation center off New Burton Road just south of the City of Dover. The recreation center will also include an area for programming offered by the Boys and Girls Club. The Isaacs Branch segment of the St. Jones Greenway connects with Dover's newly constructed Capital City Trail and is managed by Kent County, connecting U.S. Route 13 to Delaware Route 10. While there has been little collaboration between the City of Dover and Kent County in the area of recreation, the addition of these new facilities draws attention to the need for collaboration and partnership between the two agencies.

YMCA of Dover

The Dover YMCA operates a branch in Dover that includes a fitness room, fitness studios, two indoor pools, and a gymnasium. The Dover YMCA also recently purchased the Kent Swim Club, an outdoor pool on an 18-acre site that is largely wooded. This site is surrounded by neighborhoods and has served as a popular outdoor pool for many years. Under the YMCA's

City of Dover Recreation Needs Assessment

management and ownership, the role of this site in meeting the areas recreation needs will be expanded. The City of Dover participates on a committee to develop a long-range plan for the Kent Swim Club property, which could include additional recreation amenities beyond the pool and pavilions that currently exist. Additionally the YMCA has participated as a sponsor for the City's Concerts on The Green and has worked through grant funds to provide swim lessons to participants in Dover's summer day camps. Continued collaboration with the YMCA will ensure that resources are efficiently utilized to meet the needs of Dover's population.

Capital School District

The City of Dover has a long-standing collaboration with the Capital School District in the area of recreation. The Capital School District and the City of Dover have a large geographical overlap, and therefore serve many of the same constituents. The City operates an afterschool program at Towne Point Elementary School. The City of Dover's athletic leagues and sports programs often coordinate closely with the Capital School District to offer programs to youth in Dover's schools and to share field space.

Specialized Providers

The City of Dover works closely with the Delaware Special Olympics and the Delaware Senior Olympics to provide programming and opportunities that meet the needs of these more specialized constituencies.

Colleges and Universities

The City of Dover has longstanding partnerships with Delaware State University and Wesley College on programs such as athletic leagues, summer camps, and other programming. Delaware State University and Wesley College have both had college interns work with the Parks and Recreation Department to help them gain practical experience in recreation and sports management, and to help the City to offer quality affordable programming.

Outside Leagues

There are a number of outside leagues that utilize City field space to support their programming. These include the Delaware Diamonds Ladies Youth Lacrosse program, Calvary Christian Academy's soccer program, and the Delaware Union soccer program. These leagues are most frequently more regional in nature than just the City of Dover, and the City needs to balance their needs with the City's programs which are aimed principally at Dover residents.

Paying for Parks and Recreation Services

Parks and Recreation services are a general fund expense for the City of Dover. The City's recreation programs and park operations are supported through a combination of user fees and other general revenue sources. The FY 2015 operating budget for the Parks and Recreation Department is \$706,400.



City of Dover Recreation Needs Assessment

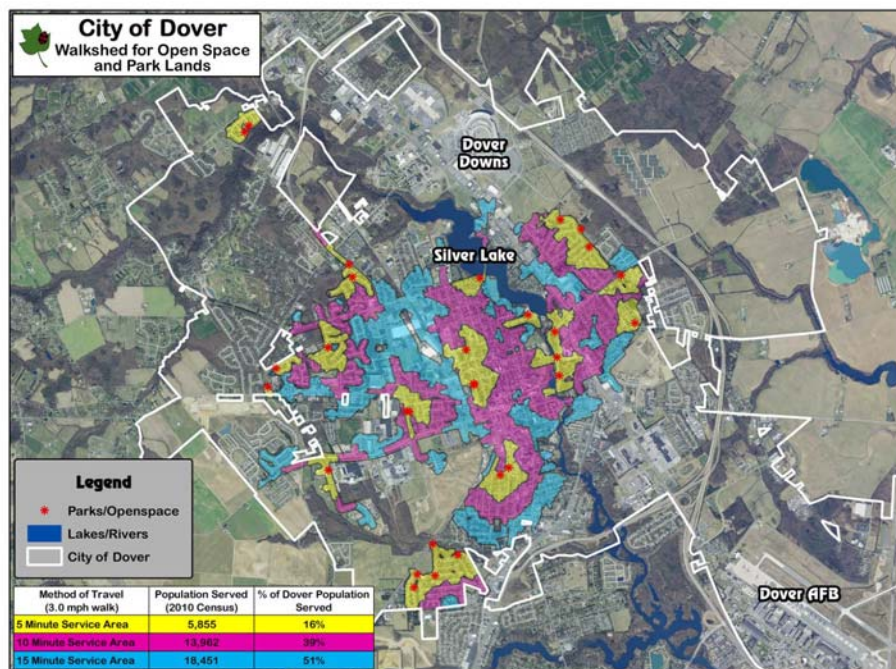
Since the Grounds Division is responsible for lawn mowing, litter pick-up, field maintenance, and other maintenance within the City's parks, a portion of the City's \$1,191,900 Grounds Division budget for FY 2015 could also be attributed to support of the park system. The annual revenue associated with the Parks and Recreation Department is approximately \$150,000. Approximately 21 percent of the Parks and Recreation operating budget is supported by the department's revenue. If the operating budget of the Grounds Division is included as a parks and recreation cost, only about 8 percent of the City's parks and recreation costs are supported by the department's revenue.

Capital improvements to the City's parks are funded through a combination of general fund sources, funds from the City's Parkland Reserve, and grant funds. The City works to utilize grant funds when they are available to supplement the City's capital investments. The City has utilized grant funds through the Delaware Land and Water Conservation Trust Fund program, administered by the Delaware Division of Parks and Recreation, to expand and improve our park system. The City's Parkland Reserve is funded primarily through payments from developers in lieu of providing recreation amenities within their residential developments. The Parkland Reserve has no reliable or steady stream of funding to sustain it over a long period of time.

Process for Developing Needs Assessment

Walksheds for Open Space and Parkland

In preparing the Recreation Needs Assessment, the City of Dover coordinated with the Delaware Division of Parks and Recreation, who maintains a statewide recreation and open space database. The Division has developed tools to help communities better analyze public recreation service levels and identify areas that are underserved by public parks. This is done primarily by mapping park locations and determining what areas are within a 15-minute walk of public parkland. The analysis does not consider private, homeowner association managed open space.



City of Dover Recreation Needs Assessment

Using this tool, several areas have been identified as underserved. These include neighborhoods such as Fox Hall, Fox Hall West, the Village of Westover, the Village of Cannon Mills, Hidden Creek, Morris Estates, Schoolview, Acorn Farms, Persimmon Park Place, Wild Meadows, the Meadows, and several other smaller neighborhoods. In several cases, the communities are served by privately owned open space, such as homeowners association amenities, or in some cases the Maple Dale Country Club. In other cases, this analysis identifies areas where additional investments should be made in recreation access (such as multi-use trails or additional parks). Appendix B includes a series of maps provided by the State of Delaware, including all public open space within the City (based on their Outdoor Recreation Inventory), underserved areas, and park walksheds.

Recreation Needs Assessment Survey

The City Department of Parks and Recreation utilized Survey Monkey to do gather information from the public for the Recreation Needs Assessment. A copy of the survey can be found in Appendix C to this document, along with a detailed summary of survey responses. Our survey process was comprised of several steps to provide a holistic picture of the recreational needs of the Dover community. Planning and design, advertising and marketing, public workshops, and methods data collection were among the main focus of the survey process. Another step in the process included our industry partners and organizations for crafting the questions and survey distribution assistance. We outlined and finalized the survey that was then distributed using multiple media formats.



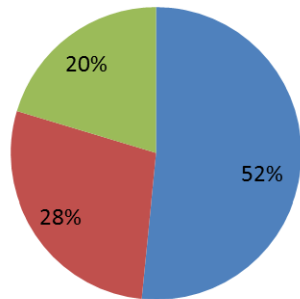
Bringing in our industry partners proved to be a valuable step in the process. The survey questions were brought to meetings of the Central Delaware Recreational Committee, Silver Lake Commission and the Bicycle Pedestrian Subcommittee to name a few. The YMCA of Dover, Delaware Special Olympics, Delaware Sports Tourism, City of Newark, Delaware Senior Olympics, Delaware State University, and Wesley College represent most of the committee members. The Parks and Recreation staff solicited input from their colleagues as well as shared their own professional knowledge to bring a complete picture of our current park system and what we may need to offer for to our citizens.

The planning and design stage of the survey focused on ensuring the reader could quickly and easily understand and respond to the question and to offer a chance to tell us something we may have missed in our response options. Keeping the survey to a user friendly and short time requirement played a role in the number of questions and how they were presented.

City of Dover Recreation Needs Assessment

Respondent Residency

■ City Resident ■ Non-Resident
■ Did Not Answer



Advertising and marketing of the survey was multifaceted. The survey was posted online on various websites such as the Dover/Kent County MPO and Delaware Senior Olympics, in addition to the City of Dover postings. Multiple public services announcements were listed in the local print media, the survey link was posted on the City of Dover Verizon channel and multiple Facebook postings. Our partner organizations encouraged their memberships to participate either in hard copy or online.

Public workshops were held to offer citizens a chance to see a complete picture of the park

system. With display boards and surveys in hand, workshops were held at Towne Point Elementary School, Dover Public Library, and the John W. Pitts Recreation Center. The first two meetings were poorly attended; however, through a more concerted media outreach, the third meeting was well-attended.

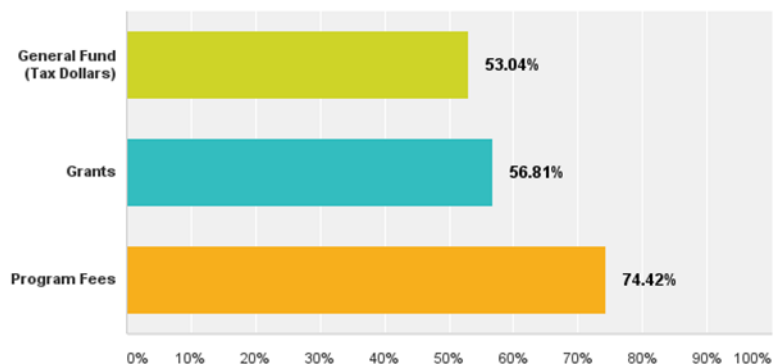
Surveys were available online and links to the survey were on our partner websites as well. Hard copies of the survey were available at the public workshops, the Dover Public Library, Department of Customer Services at Reed Street, and the John W. Pitts Recreation Center. All of the hard copy submissions were manually keyed and comments were entered as submitted. Data collection from all surveys completed was combined for offering the final results.

The survey included general questions, as well as focused questions on each of the three anchor parks and sections on Dover/New Street Park and Williams Park.

A total of 506 surveys were completed. Of these 52 percent were City of Dover residents; 28 percent were non-residents of Dover, and 20 percent did not answer the question of residence. While the survey methodology includes a self-selected sample and not a completely random sample of Dover residents, the number of surveys completed and the portion completed by Dover residents is helpful in discerning the priorities of Dover residents as they relate to recreation.

Q3 How do you feel recreational programs should be funded?

Answered: 477 Skipped: 29



City of Dover Recreation Needs Assessment

Based on all of the surveys completed (506 surveys), the following needs were ranked most highly ($\geq 25\%$):

Silver Lake Park	Indoor Restrooms	39.9%
Schutte Park	Expansion of Trail System	38.3%
Dover Park	Indoor Restrooms	32.0%
Schutte Park	Benches	29.6%
Dover Park	Paved Trail System (loop)	26.5%
JWP Center	Weight Room	26.3%
Silver Lake Park	Benches	26.3%
Schutte Park	Fitness Stations Along Trail	26.1%
Dover Park	Indoor Recreation Center	25.7%

People seem generally supportive that programs should be supported by a mix of fees, grants and taxes. Respondents also indicated that fundraising and seeking business sponsorships should be sought to support programs. There is also significant support for City residents paying a lower fee for programs than non-residents of Dover.

The City has discussed the need for a splash pad and a skate park for several years. Based on the survey responses, a skate park seems best suited for Schutte Park and/or Dover Park, a splash pad seems best suited for Dover Park and/or Silver Lake Park. While not highly indicated through the numerical survey responses, the comments provided on the surveys and through other outreach indicated strong support for pickle ball (particularly among seniors) and a dog park.

Statewide Comprehensive Outdoor Recreation Plan (SCORP)

The State of Delaware Division of Parks and Recreation develops a Statewide Comprehensive Outdoor Recreation Plan (SCORP) every five years. This plan helps the State to prioritize grant funding and other investments in outdoor recreation to meet the needs identified by State residents. In developing the SCORP, the State performs a random telephone survey to assess recreation participation patterns and identify needs. In performing the survey and analyzing the data, the State is divided into five regions. Kent County is identified as Region 3. In performing the survey, the State oversamples larger municipalities, including Dover, to provide meaningful data to the local recreation providers. This information can be viewed in combination with the City's survey data to develop a more comprehensive picture of recreation participation patterns and needs.

The City's survey focused principally on use of the City's park system and needs specific to the park system. The State's information can supplement this to give us a more comprehensive picture of the recreation needs in Dover.

In reviewing the data collected in the State's survey, 61% of the 267 respondents in Dover indicated that outdoor recreation in Delaware is very important to them personally. Sixty-one

City of Dover Recreation Needs Assessment

percent of Dover respondents also indicated that the principal reason for their participation in outdoor recreation is for fitness. Seventy percent of respondents indicated that they choose their locations for outdoor recreation because they live near the facility, and 57 percent indicated that they would participate more in outdoor recreation if there were areas closer to where they live.

In response to the question of what facilities would survey respondents like to see added to a park in their community, responses included:

- Improved Amenities (17%)
- Outdoor Public Swimming Pools (17%)
- Indoor Recreation Facilities (14%)
- Playgrounds (12%)
- Bike Paths (8%)
- Hiking/Walking Trails (7%)
- Paved Walkways (6%)
- Restrooms (6%)
- Football Fields (5%)

Summary of Data and Process

In looking together at all of the sources of data that help us to form a picture of recreation patterns and needs within the City, we are able to develop a plan that focuses on meeting these needs. In looking at the walksheds and seeing through the State's survey that proximity to recreation areas affects residents' participation in recreation, we are able to determine where we may need to look for opportunities to provide outdoor recreation in these areas. This could be achieved by adding a new park or by partnering with other providers who may already have facilities in the area to make their facilities more publicly accessible. The confluence of walksheds, proximity to recreation areas, the prevalence of walking and jogging as a desired recreation activity, and the connection between outdoor recreation and fitness support the need to continue to improve the pedestrian infrastructure within the City to ensure that residents have safe locations to walk or jog. Much of the area that is outside of a 15-minute walk to a park also has poor pedestrian connectivity. For example, Kenton Road lacks sidewalks, so opportunities to walk or jog safely are limited to streets within subdivision, which also lack sidewalks but experience lower traffic volumes and traffic speeds.

City of Dover Recreation Needs Assessment

Implementation Strategies

As stated previously, one of the principal purposes of this assessment is to ensure that limited dollars are invested in a way that best meets the needs of Dover's residents. To that end, the following strategies will guide the City as we plan for capital investments in our recreation infrastructure and as we work to provide the quality programming our residents have come to enjoy.

- Develop master plans for the anchor parks. Dover's anchor parks serve as regional hubs for recreation within the City of Dover. Appropriate planning for improvements to these parks needs to involve the public, and the plans for improvement to these parks will drive the City's capital plan as it relates to parks and recreation.

- Dover Park

As previously stated, this 28-acre park was home to the City's first indoor recreation center. Due to its functional obsolescence, deterioration over the years, and lack of successful programming following the opening of the John W. Pitts Recreation Center, this recreation center building was demolished in 2014. During the debate over the center's demolition, there was significant discussion of the importance of addressing the recreation needs of residents on the east side of U.S. Route 13 and the concern that with the investments in Schutte Park and the John W. Pitts Recreation Center, the City failed to provide for residents east of U.S. Route 13 who may not be able to access the new amenities at Schutte Park. Additionally during this discussion, concerns of safety and lighting within the park arose. A master plan for Dover Park needs to address these challenges.

As it relates to the Recreation Needs Assessment Survey, the following amenities need to be addressed within a master plan for Dover Park:

- Indoor Restrooms
- Paved Loop Trail System
- Fitness Stations along the Paved Trail System
- Skate Park
- Splash Pad
- Bicycle Racks



City of Dover Recreation Needs Assessment

Additionally, the master plan needs to reserve space in the event that an indoor recreation center is needed in the future. Of the total 506 survey respondents, 25.7 percent indicated that this was a priority. While other priorities for improvements to the parks system were identified as higher priorities, it is important to provide a location of an indoor facility within Dover Park for some point in the future as our needs for indoor recreation increase. The SCORP survey did identify indoor recreation facilities as one of the more highly ranked needs in the City of Dover.

- Schutte Park

Schutte Park has served as the hub for Dover's athletic leagues and active recreation programming. In 2004, with the development of Nottingham Meadows land was donated for the expansion Schutte Park. This land had been separated from the park by Wyoming Mill Road, but with the realignment of Wyoming Mill Road in 2013, this land is now contiguous to the remainder of the park. In 2014, the City had a land survey completed of the entire Schutte Park, including the Dover Little League Park and the areas of the park utilized by the Public Works Department. The City will utilize in-house engineering staff to create a master plan for this park that includes expansion of the multi-purpose athletic fields and the parking necessary to support the field expansion and other park amenities. The master plan will also include expansion of the paved path to create a loop. Based on the feedback received through the Recreation Needs Assessment Survey, the plan might also include the addition of benches, fitness stations along the loop trail, tennis courts, and a skate park. This plan also needs to account for the potential expansion of the John W. Pitts Recreation Center in the future, as the demand for indoor recreation space increases.

Schutte Park is impacted by the Source Water Protection Overlay Zone (SWPOZ), a zoning overlay intended to protect water quality through protecting recharge areas and areas around municipal wells. Schutte Park contains both an Excellent Recharge Area and a municipal well, so the park master plan will need to ensure that these resources are protected as the park is improved to meet the population's recreation needs.

- Silver Lake Park

Silver Lake Park is centered on the St. Jones River, including the shoreline of Silver Lake just upstream of the dam and the St. Jones River below the dam. It is a popular location for community walks and 5K run events, as well as fishing, picnicking, playing, or just relaxing. Planning for Silver Lake Park needs to account for the sensitive natural resources, including the stream bank, floodplain, and the flora and fauna that depend on the St. Jones River. There have been a number of projects in recent years to improve water quality in Silver Lake and the St. Jones River, including a bank restoration project along the St. Jones River within the park. The City of Dover has worked closely with the Silver Lake Commission and DNREC on

City of Dover Recreation Needs Assessment

efforts to improve the park. Any future plans for the park need to include close coordination with the Silver Lake Commission and DNREC as well. The northwest corner of the park near the parking lot off Washington Street also includes an old African American cemetery that is threatened by erosion. Planning efforts for Silver Lake Park need to include efforts to survey the extent of the cemetery and develop a plan to protect it. Coordination with the State Historic Preservation Office will be necessary in this regard.

In addition to these issues that would need to be addressed in a plan for Silver Lake Park, the Recreation Needs Assessment Survey indicates a very high priority for restrooms at this park. Other amenities to be evaluated during a park master plan would include additional benches and bike racks in the park and a splash pad.

- Continue to develop and implement improvement plans for neighborhood parks. The Statewide survey completed for the SCORP indicates both statewide and in Dover that respondents would be more likely to participate in outdoor recreation if opportunities were available closer to where they live. Seventy percent of the respondents in Dover indicated that they chose locations for outdoor recreation based on proximity to where they live. Neighborhood parks play an important role in quality of life for Dover residents, providing opportunities for daily activity. The City's capital investments in our park system need to include regular upgrades to amenities in local parks. Upgrades to existing parks should always include a process to gather inputs from the residents who live nearest to the parks to ensure that improvements are in line with residents' priorities.
- Determine appropriate location for dog park. Work with the public to design a dog park that meets the needs of the community.
- Develop a reliable and consistent stream of funding for the Parkland Reserve. Currently, the Parkland Reserve has no consistent stream of revenue. Cash-in-lieu of active recreation area is permitted in the *Zoning Ordinance* only if the Planning Commission determines that providing active recreation area within a residential development is impractical or infeasible. The need for active recreation space within residential developments is currently addressed through the requirement that developers set aside area and develop it with active recreation amenities to be maintained by the homeowners association or other private entity. Unfortunately, homeowners associations are frequently ill-equipped to manage these areas, and these areas are intended only for the use of residents within the specific community. The following

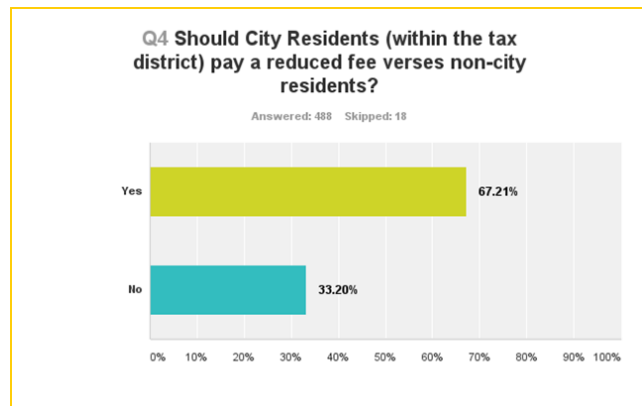
City of Dover Recreation Needs Assessment

mechanisms should be evaluated as ways to provide a regular funding stream to the Parkland Reserve:

- Amend the *Zoning Ordinance* to eliminate the requirement for active recreation area in residential developments. Replace this requirement with a surcharge on building permits that would fund the Parkland Reserve.
 - Explore other mechanisms to provide funding for the Parkland Reserve
- Work with residents and recreation partners to ensure availability of outdoor recreation opportunities for those areas that have been identified as outside of the walkshed to recreation areas.
 - Host public meetings in the neighborhoods and park areas identified for constituent feedback
 - Include industry partners such as the Dover/Kent County MPO, DelDOT, and DNREC to assist in ensuring opportunities to fill gaps while complimenting pathway/trail plans.
- Continue to build upon and develop partnerships with other agencies to expand recreational offerings within the City.
 - Keep current relationships fresh and viable while exploring the opportunity to find new partners in the area to keep focus on City of Dover recreational programming needs
 - Determine preventative measures ensure duplication of services remains limited.
- Focus on providing Dover residents avenues to participate in our programs.
- Develop a stronger collaboration with Kent County to ensure that we are collectively meeting the needs of residents in a way that provides value to taxpayers.
- Explore other funding mechanisms, including corporate sponsorships, to augment revenue streams.

City of Dover Recreation Needs Assessment

- Assign staff to seek corporate and foundation funding resources and grants for promoting healthy lifestyles, park amenities and services
- Develop fee differential for residents and non-residents for participation in recreation programs.
 - Consult with other recreation providers in Delaware who employ a variable rate for residents versus non-residents
 - Use data to create and implement a plan for which City of Dover residents pay a reduced participation rate, either through a non-resident surcharge or a separate fee for residents and non-residents.
- Address park maintenance needs. As new amenities are added to the City's park system, these amenities need to be maintained. In planning for amenities, maintenance needs must be taken into consideration and addressed in the planning process.



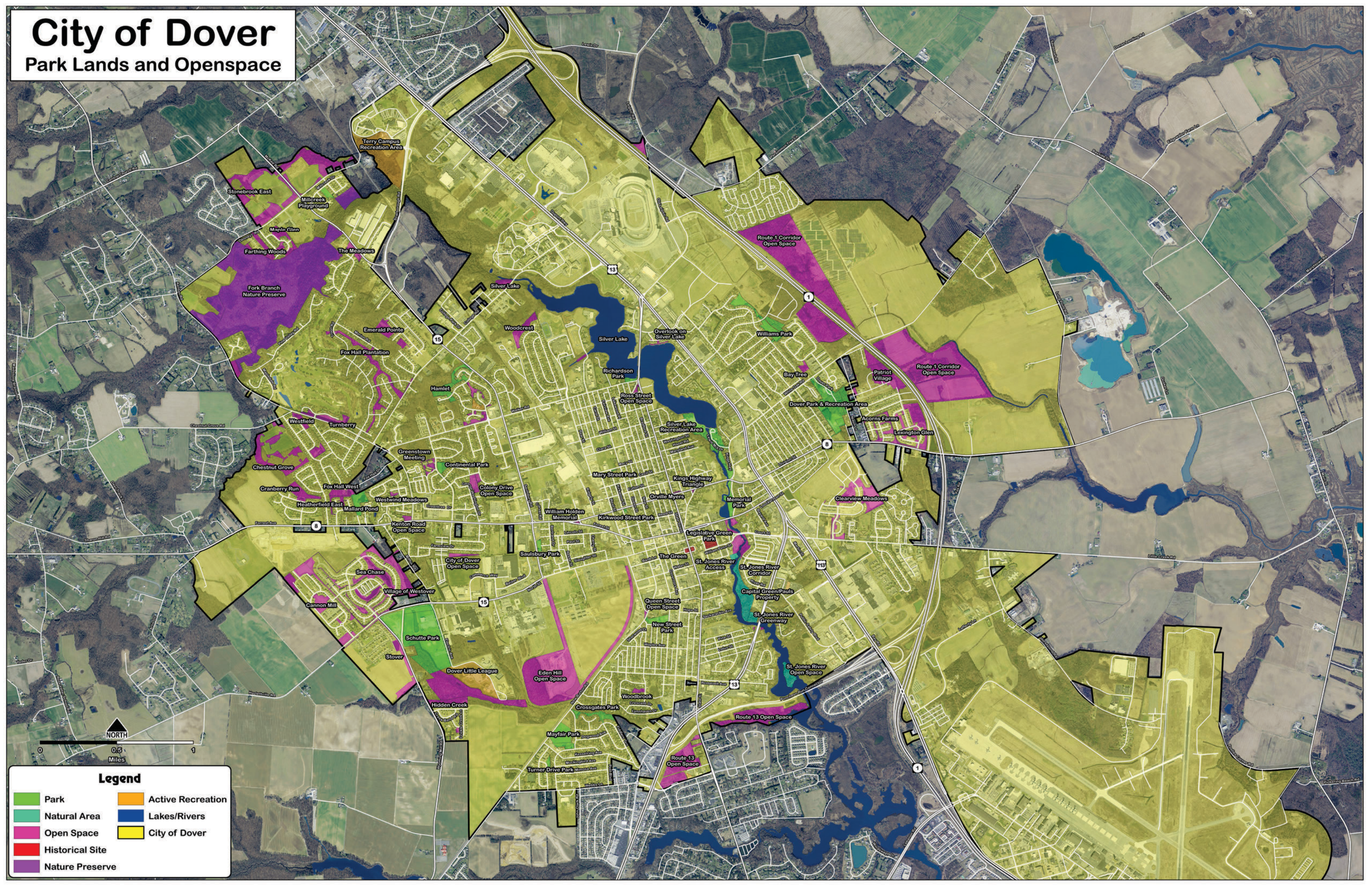
Appendix A:

Dover City Parks

Appendix B:
Recreation and
Park Walkshed Maps

City of Dover

Park Lands and Openspace

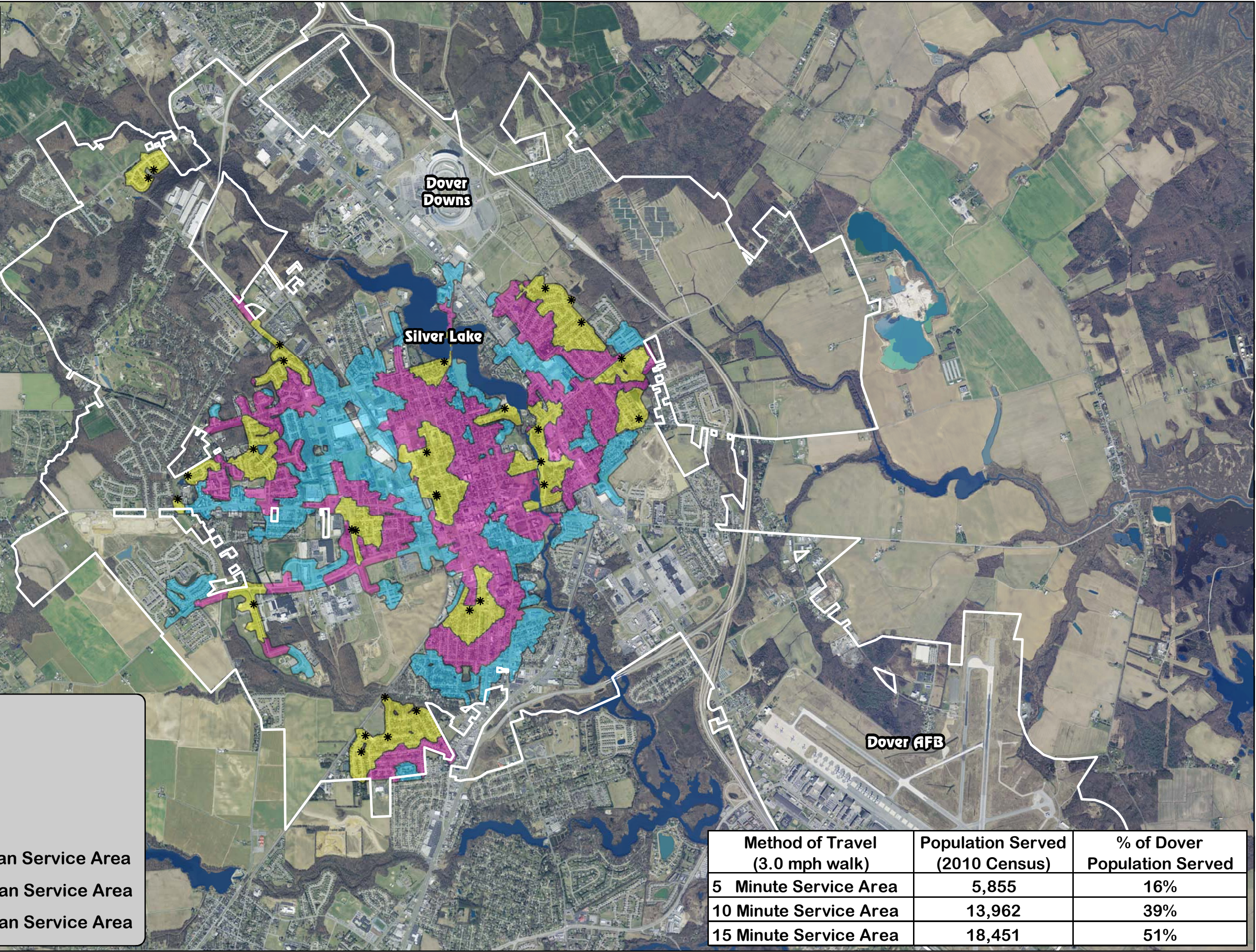


Legend

- | | |
|--|---|
| ■ Park | ■ Active Recreation |
| ■ Natural Area | ■ Lakes/Rivers |
| ■ Open Space | ■ City of Dover |
| ■ Historical Site | |
| ■ Nature Preserve | |

City of Dover

Pedestrian Service Area



Legend

* Parks/Openspace

City of Dover

Lakes/Rivers

5 Minute Pedestrian Service Area

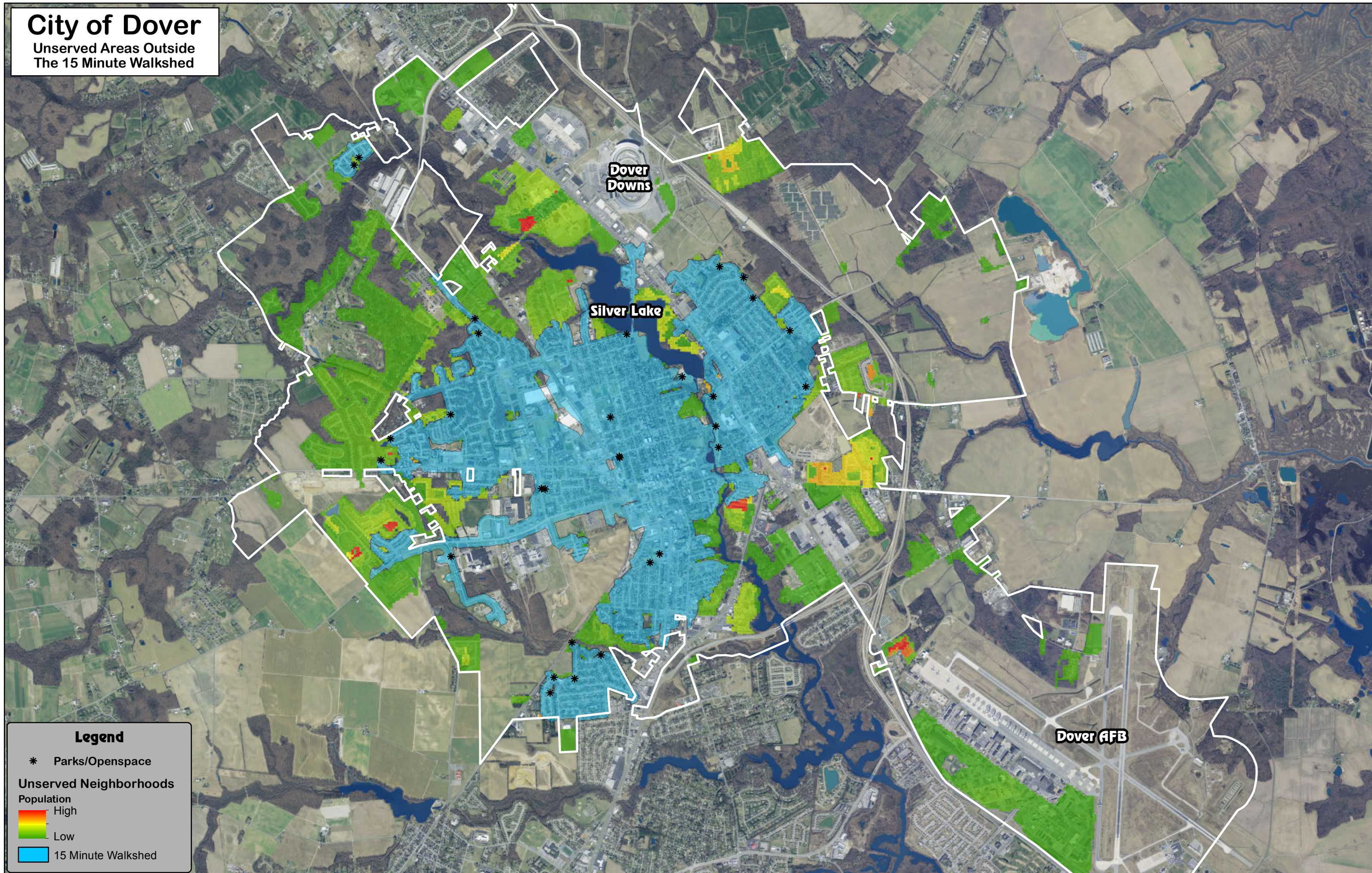
10 Minute Pedestrian Service Area

15 Minute Pedestrian Service Area

Method of Travel (3.0 mph walk)	Population Served (2010 Census)	% of Dover Population Served
5 Minute Service Area	5,855	16%
10 Minute Service Area	13,962	39%
15 Minute Service Area	18,451	51%

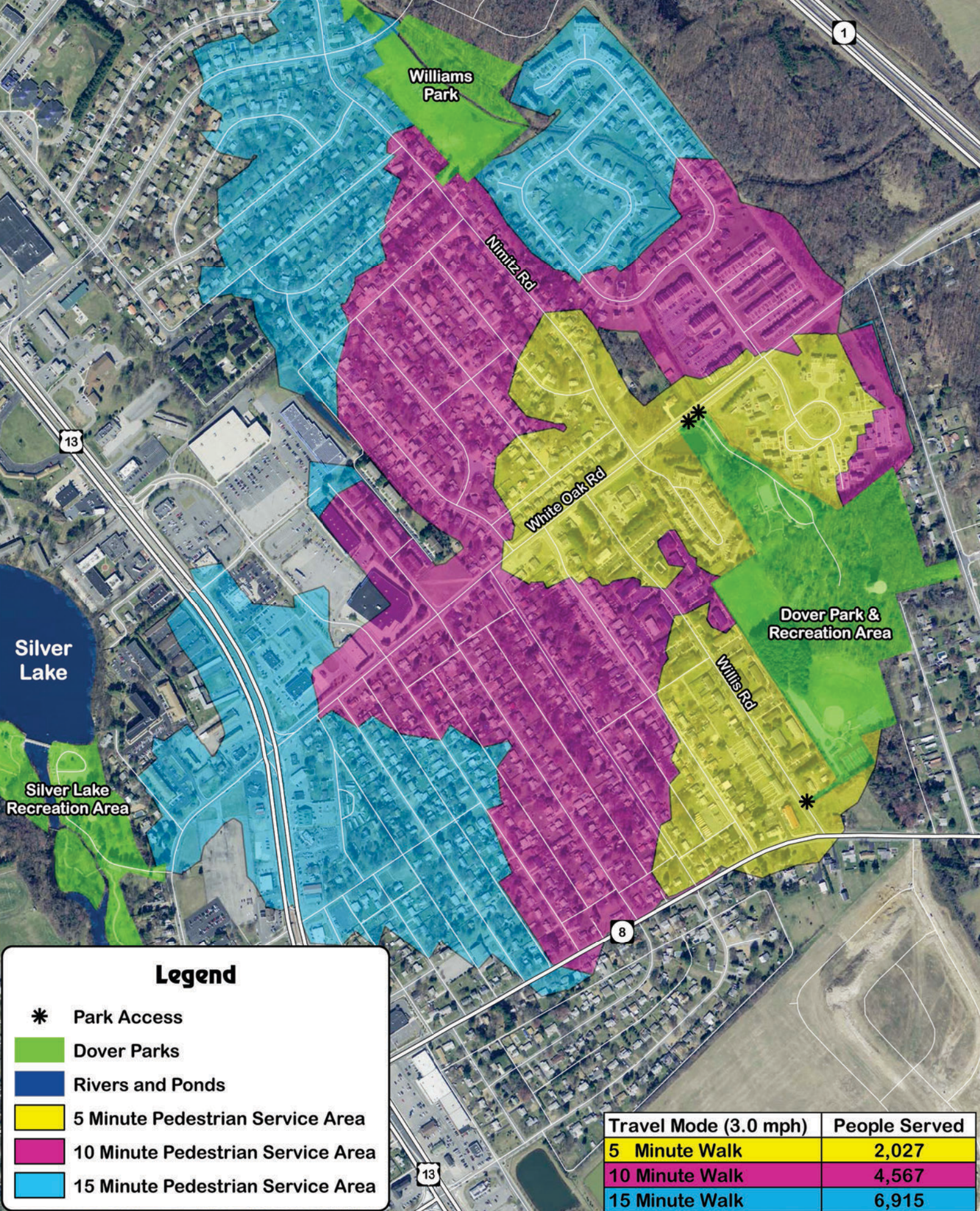
City of Dover

Unserved Areas Outside
The 15 Minute Walkshed



Dover Park & Recreation Area

Pedestrian Service Area



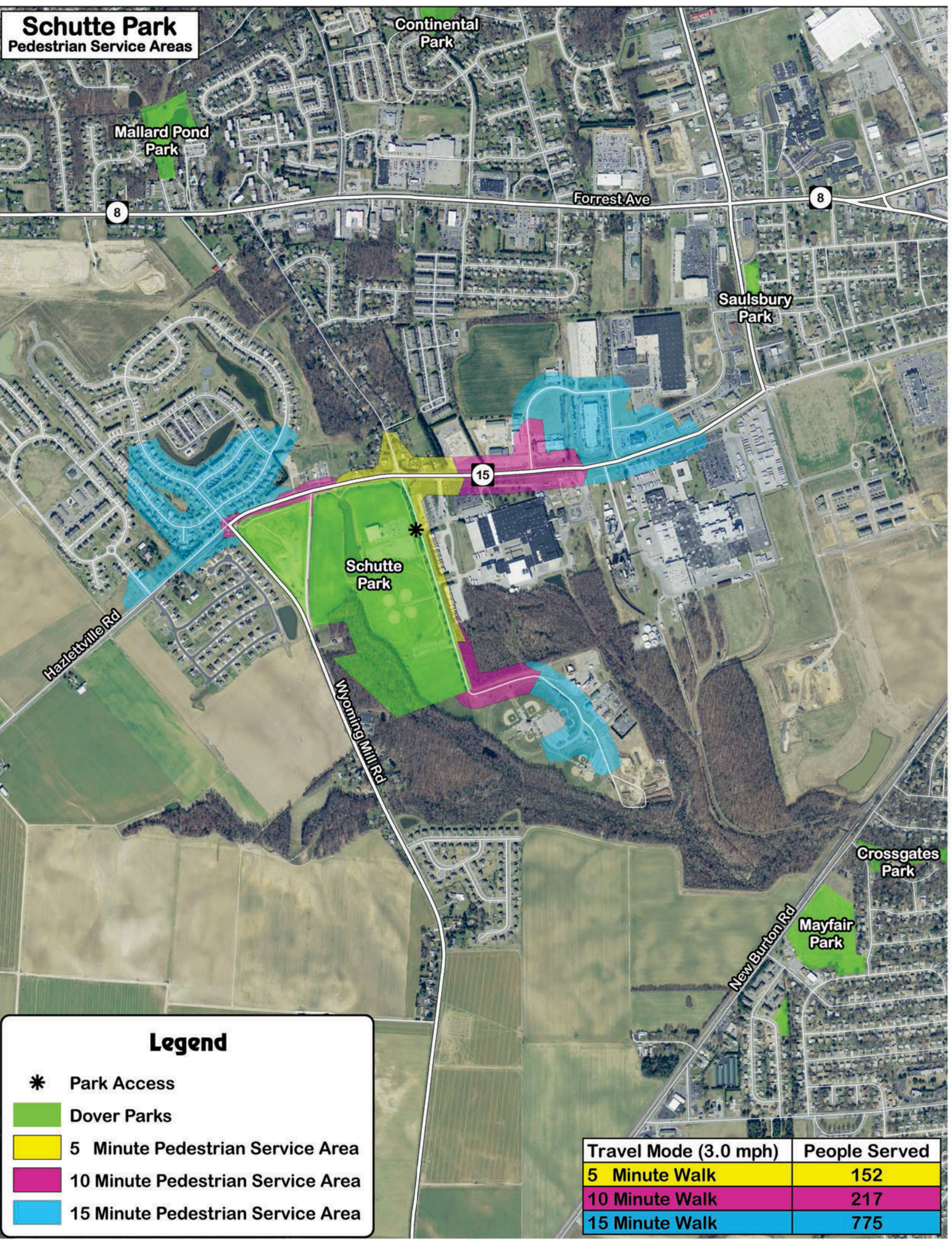
Legend

- * Park Access
- Dover Parks
- Rivers and Ponds
- 5 Minute Pedestrian Service Area
- 10 Minute Pedestrian Service Area
- 15 Minute Pedestrian Service Area

Travel Mode (3.0 mph)	People Served
5 Minute Walk	2,027
10 Minute Walk	4,567
15 Minute Walk	6,915

Schutte Park

Pedestrian Service Areas



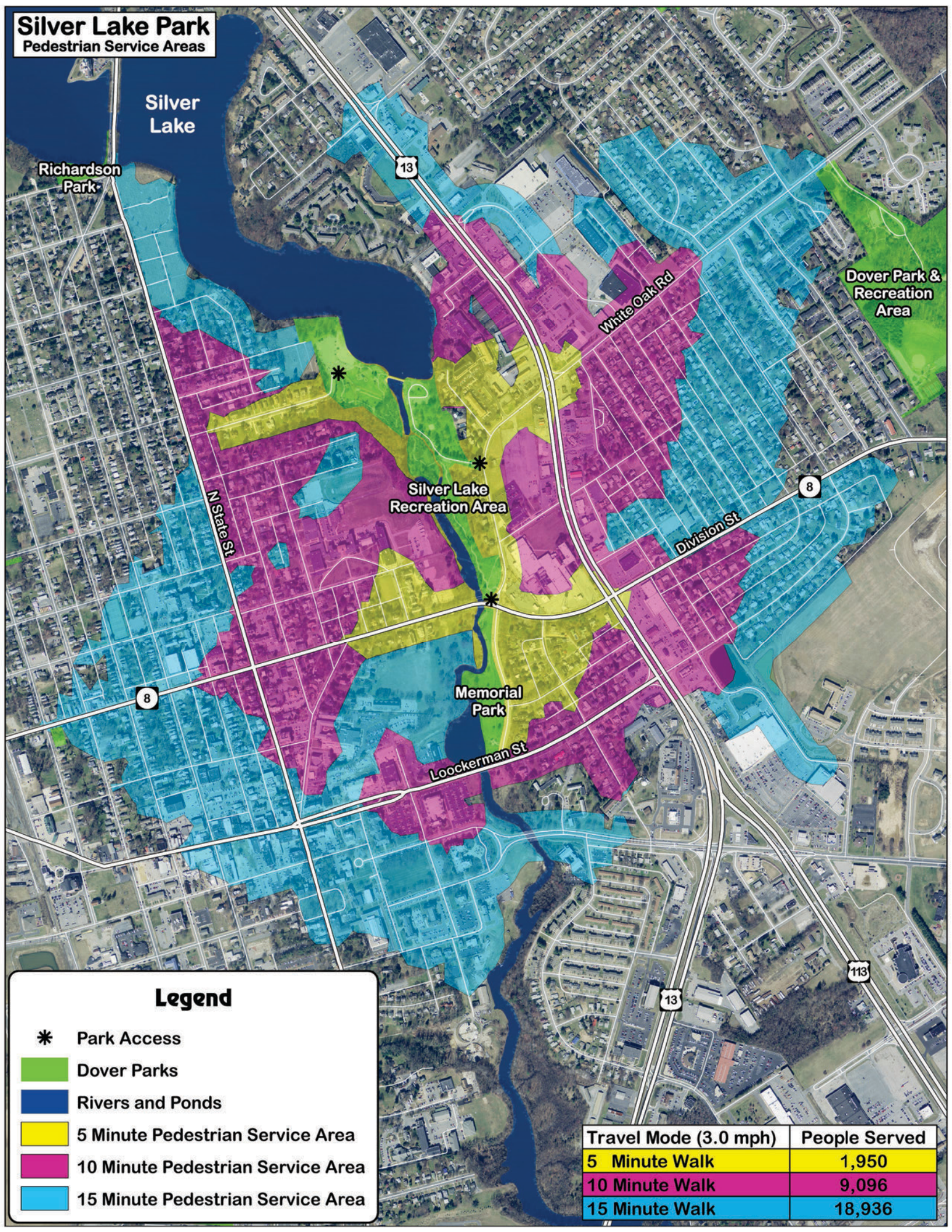
Legend

- * Park Access
- Dover Parks
- 5 Minute Pedestrian Service Area
- 10 Minute Pedestrian Service Area
- 15 Minute Pedestrian Service Area

Travel Mode (3.0 mph)		People Served
5 Minute Walk		152
10 Minute Walk		217
15 Minute Walk		775

Silver Lake Park

Pedestrian Service Areas



Legend

* Park Access

Dover Parks

Rivers and Ponds

5 Minute Pedestrian Service Area

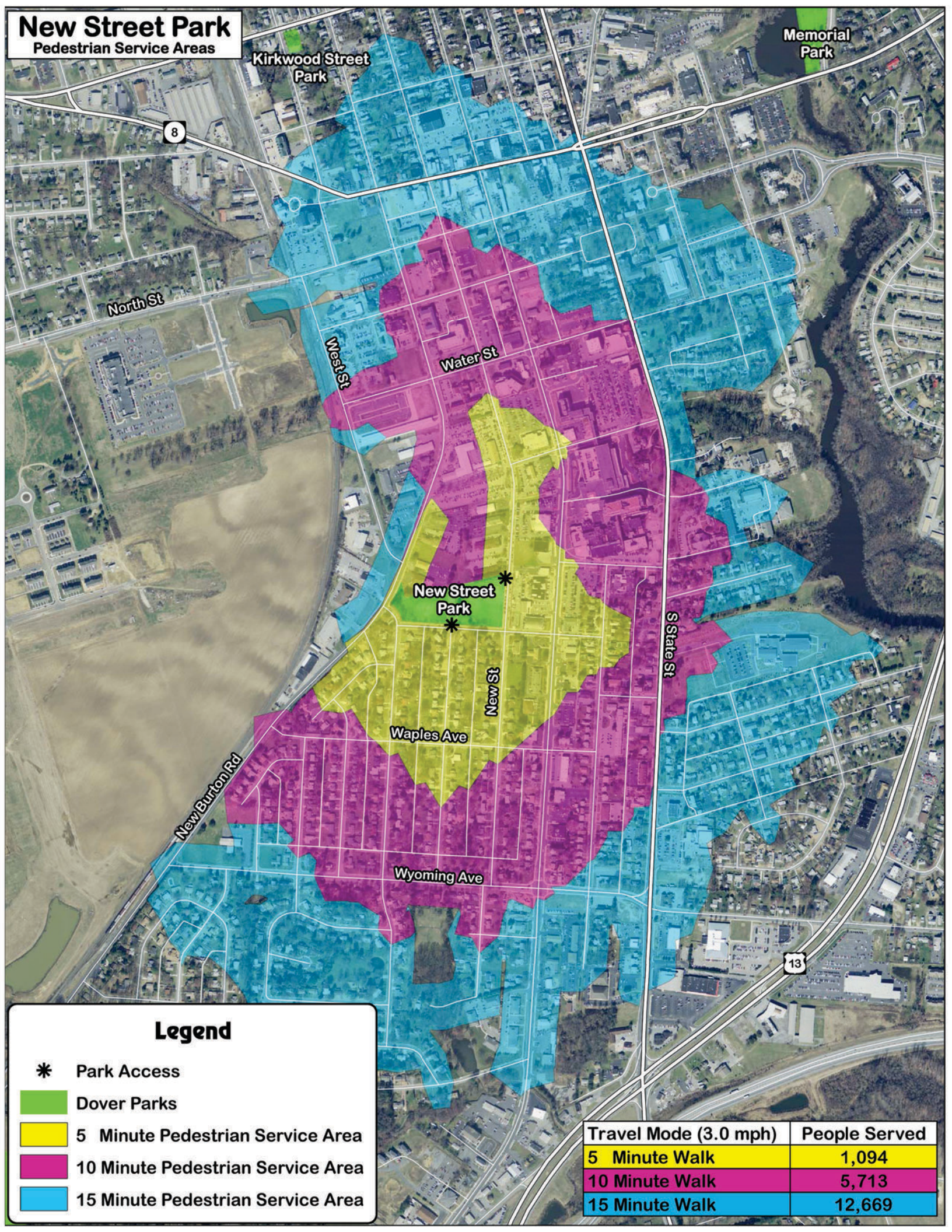
10 Minute Pedestrian Service Area

15 Minute Pedestrian Service Area

Travel Mode (3.0 mph)	People Served
5 Minute Walk	1,950
10 Minute Walk	9,096
15 Minute Walk	18,936

New Street Park

Pedestrian Service Areas



Appendix C:
Survey Questionnaire
and Summary



Recreational Needs Assessment Survey

Help us provide the parks and recreational services needed to make Dover a place where people want to live, work, and play!

We want to hear from you. What programs or activities would you like to see offered? What features would you like your parks to have? Share your thoughts with us on this brief survey that will be used to shape Dover's Parks and Recreation system into the future.

You may take the survey online at the following link:

<https://www.surveymonkey.com/s/CODRNA>

Please return completed surveys to:

Mail: City of Dover Parks & Recreation
c/o Carolyn Courtney
PO Box 475
Dover DE 19904

Hand Delivery:
City of Dover Parks & Recreation
John W. Pitts Recreation Center
c/o Carolyn Courtney
10 Electric Avenue
Dover DE 19904

Questions, please call: (302) 736-7050

City of Dover Recreational Needs Assessment

What would you like to see offered by the City of Dover Parks & Recreation Department?

Let's start with some basics!

1. How often do you/household members participate in a City of Dover activity, league, trip, or program?

Please select: Once A Year 2 – 3 Times Monthly
Daily 2 – 3 Times Annually
2 – 3 Times Weekly Do Not Use

2. What programs are you interested in seeing included in the programming schedule?

- | | |
|---|---|
| <input type="checkbox"/> Additional Leagues | <input type="checkbox"/> Senior Recreational Programs |
| <input type="checkbox"/> Adult Sports | <input type="checkbox"/> Senior Sports Programs |
| <input type="checkbox"/> Healthy Eating Seminars | <input type="checkbox"/> Toddler Development Programs |
| <input type="checkbox"/> More Fitness | <input type="checkbox"/> Winter Break Camp for Youth |
| <input type="checkbox"/> More Trips | <input type="checkbox"/> Youth Fitness |
| <input type="checkbox"/> Persons with Disabilities Programs | <input type="checkbox"/> Youth Sports |
| <input type="checkbox"/> Other (please specify): _____ | |

3. How do you feel recreational programs should be funded?

- ☐ General Fund
☐ Grants
☐ Program Fees
☐ Other (please specify): _____

4. Should city residents (within the tax district) pay a reduced fee verses non-city residents?

☐ Yes ☐ No

5. How do you typically hear about our programs?

- | | |
|---|--|
| <input type="checkbox"/> Delaware State News | <input type="checkbox"/> Radio Announcement |
| <input type="checkbox"/> Dover Post | <input type="checkbox"/> Website |
| <input type="checkbox"/> Emails from Parks & Recreation | <input type="checkbox"/> Wilmington News Journal |
| <input type="checkbox"/> Flyer or Program Guide | <input type="checkbox"/> Other (please specify): _____ |

City of Dover Recreational Needs Assessment

Dover Park

This series of questions relates to Dover Park located at 1210 White Oak Road.

6. How often do you/household members visit Dover Park?

Please select: Once A Year 2 – 3 Times Monthly
Daily 2 – 3 Times Annually
2 – 3 Times Weekly Do Not Use

7. What is the nature of your Dover Park visit?

- | | |
|--|---|
| <input type="checkbox"/> Basketball Courts | <input type="checkbox"/> Softball or Multipurpose Field |
| <input type="checkbox"/> Disc (Frisbee) Golf | <input type="checkbox"/> Tennis Courts |
| <input type="checkbox"/> League Activity (ie: Softball, Field Hockey, etc) | <input type="checkbox"/> Walking/Jogging |
| <input type="checkbox"/> Playground Equipment | <input type="checkbox"/> Other (please specify): _____ |
| <input type="checkbox"/> Picnicking | _____ |

8. What would you like to see at Dover Park?

- | | |
|--|--|
| <input type="checkbox"/> Bike Racks | <input type="checkbox"/> Paved Trail System (looped) |
| <input type="checkbox"/> Bocce Ball Area | <input type="checkbox"/> Pickle Ball Court |
| <input type="checkbox"/> Fitness Stations Along Trail | <input type="checkbox"/> Sand Volleyball |
| <input type="checkbox"/> Indoor Recreation Center | <input type="checkbox"/> Skate Park |
| <input type="checkbox"/> Indoor Restrooms | <input type="checkbox"/> Splash Pad |
| <input type="checkbox"/> Other (please specify): _____ | |

New Street Park

This series of questions relates to New Street Park located on Dover & New Streets.

9. How often do you/household members visit New Street Park?

Please select: Once A Year 2 – 3 Times Monthly
Daily 2 – 3 Times Annually
2 – 3 Times Weekly Do Not Use

10. What is the nature of your New Street Park visit?

- | | |
|-------------------------------------|--|
| <input type="checkbox"/> Basketball | <input type="checkbox"/> Open Space Play |
| <input type="checkbox"/> Picnicking | <input type="checkbox"/> Softball Field Use |
| <input type="checkbox"/> Playground | <input type="checkbox"/> Other (please specify): _____ |

City of Dover Recreational Needs Assessment

11. What would you like to see at New Street Park?

- | | |
|--|--|
| <input type="checkbox"/> Benches | <input type="checkbox"/> Reading Garden Area |
| <input type="checkbox"/> Bike Racks | <input type="checkbox"/> Sand Volleyball |
| <input type="checkbox"/> Bocce Ball Area | <input type="checkbox"/> Shuffleboard Court |
| <input type="checkbox"/> Horseshoe Pits | <input type="checkbox"/> Skate Park |
| <input type="checkbox"/> Indoor Restroom | <input type="checkbox"/> Splash Pad |
| <input type="checkbox"/> Paved Trail System w/Fitness Stations | <input type="checkbox"/> Tennis Court |
| <input type="checkbox"/> Pickle Ball | <input type="checkbox"/> Other (please specify): _____ |

Schutte Park

This series of questions relates to Schutte Park located on Hazeletville Road (West North Street).

12. How often do you/household members visit Schutte Park?

- Please select:
- | | |
|--------------------|----------------------|
| Once A Year | 2 – 3 Times Monthly |
| Daily | 2 – 3 Times Annually |
| 2 – 3 Times Weekly | Do Not Use |

13. What is the nature of your Schutte Park visit?

- | | |
|---|-------------------------------------|
| <input type="checkbox"/> Lacrosse | <input type="checkbox"/> Picnicking |
| <input type="checkbox"/> League Activity (ie: Softball, Field Hockey, etc.) | <input type="checkbox"/> Soccer |
| <input type="checkbox"/> Playground | <input type="checkbox"/> Trail Use |
| <input type="checkbox"/> Other (please specify): _____ | |

14. What would you like to see at Schutte Park?

- | | |
|--|---|
| <input type="checkbox"/> Basketball Court | <input type="checkbox"/> Horseshoe Pits |
| <input type="checkbox"/> Benches | <input type="checkbox"/> Pickle Ball Courts |
| <input type="checkbox"/> Bike Racks | <input type="checkbox"/> Sand Volleyball |
| <input type="checkbox"/> Bocce Ball Area | <input type="checkbox"/> Shuffleboard Court |
| <input type="checkbox"/> Disc (Frisbee) Golf | <input type="checkbox"/> Skate Park |
| <input type="checkbox"/> Expansion of Trail System | <input type="checkbox"/> Splash Pad |
| <input type="checkbox"/> Fitness Stations Along Trail | <input type="checkbox"/> Tennis Court |
| <input type="checkbox"/> Other (please specify): _____ | |

15. Do you visit the John W. Pitts Recreation Center (JWP)?

- ☐ Yes ☐ No

City of Dover Recreational Needs Assessment

16. If Yes, to visiting the JWP, what is the nature of your visit?

- | | |
|--|--|
| <input type="checkbox"/> Adult Sports League | <input type="checkbox"/> Instructional Clinics |
| <input type="checkbox"/> Birthday Party Package | <input type="checkbox"/> Open Gym |
| <input type="checkbox"/> Camps | <input type="checkbox"/> Senior Sports |
| <input type="checkbox"/> Card Making for Adults | <input type="checkbox"/> Walking Track |
| <input type="checkbox"/> Challenger Sports Event | <input type="checkbox"/> Youth Card/Craft Making |
| <input type="checkbox"/> Fitness Class | <input type="checkbox"/> Youth Sports League |
| <input type="checkbox"/> High School Sports League | <input type="checkbox"/> Other (please specify): _____ |

17. What would like to see added to JWP?

- ☐ Larger Multipurpose Room(s)
☐ Shower Area(s)
☐ Weight Room
☐ Other (please specify): _____

Silver Lake Park

This series of questions relates to Silver Lake Park in Dover.

18. How often do you/members of your household visit Silver Lake Park?

Please select: Once A Year 2 – 3 Times Monthly
 Daily 2 – 3 Times Annually
 2 – 3 Times Weekly Do Not Use

19. What is the nature of your Silver Lake visit?

- | | |
|--|--|
| <input type="checkbox"/> Bird Watching | <input type="checkbox"/> Picnicking |
| <input type="checkbox"/> Boating | <input type="checkbox"/> Playground |
| <input type="checkbox"/> Fishing | <input type="checkbox"/> Walking/Jogging |
| <input type="checkbox"/> Other (please specify): _____ | |

20. What would you like to see at Silver Lake?

- | | |
|--|---|
| <input type="checkbox"/> Benches | <input type="checkbox"/> Indoor Restrooms |
| <input type="checkbox"/> Bike Racks | <input type="checkbox"/> Sand Volleyball |
| <input type="checkbox"/> Bocce Ball Area | <input type="checkbox"/> Shuffleboard Court |
| <input type="checkbox"/> Disc (Frisbee) Golf | <input type="checkbox"/> Skate Park |
| <input type="checkbox"/> Horseshoe Pits | <input type="checkbox"/> Splash Pad |
| <input type="checkbox"/> Other (please specify): _____ | |

City of Dover Recreational Needs Assessment

Williams Park

This series of questions relates to Williams Park located behind the Towne Point & White Oak Farms development.

21. How often do you/members of your household visit Williams Park?

Please select: Once A Year 2 – 3 Times Monthly
Daily 2 – 3 Times Annually
2 – 3 Times Weekly Do Not Use

22. What is the nature of your Williams Park visit?

- | | |
|--|---|
| <input type="checkbox"/> Basketball | <input type="checkbox"/> Multipurpose Field Use |
| <input type="checkbox"/> Picnicking | <input type="checkbox"/> Open Space Play |
| <input type="checkbox"/> Playground | |
| <input type="checkbox"/> Other (please specify): _____ | |

23. What would you like to see at Williams Park?

- | | |
|--|---|
| <input type="checkbox"/> Benches | <input type="checkbox"/> Reading Garden |
| <input type="checkbox"/> Bike Racks | <input type="checkbox"/> Sand Volleyball |
| <input type="checkbox"/> Bocce Ball Area | <input type="checkbox"/> Shuffleboard Court |
| <input type="checkbox"/> Horseshoe Pits | <input type="checkbox"/> Skate Park |
| <input type="checkbox"/> Indoor Restroom | <input type="checkbox"/> Splash Pad |
| <input type="checkbox"/> Paved Trail System w/Fitness Stations | <input type="checkbox"/> Tennis Court |
| <input type="checkbox"/> Other (please specify): _____ | |

Did we miss your favorite neighborhood park?

We have many parks located in our City of Dover neighborhoods. Please share your feedback on these park areas that are in your neighborhood.

24. For which of the following neighborhood parks are you providing feedback?

- | | |
|---|---|
| <input type="checkbox"/> Constitution Park | <input type="checkbox"/> Millcreek Park |
| <input type="checkbox"/> Continental Park | <input type="checkbox"/> Orville Myers Park |
| <input type="checkbox"/> Crossgates Park | <input type="checkbox"/> Pauls Property |
| <input type="checkbox"/> Division/Kirkwood Streets Park | <input type="checkbox"/> Richardson Park |
| <input type="checkbox"/> Hamlet Park | <input type="checkbox"/> Saulsbury Park |
| <input type="checkbox"/> Heatherfield East | <input type="checkbox"/> The Green |
| <input type="checkbox"/> Kirkwood/Mary Streets Park | <input type="checkbox"/> Turner Drive Park |
| <input type="checkbox"/> Mallard Pond Park | <input type="checkbox"/> Westfield Park |
| <input type="checkbox"/> Mayfair Park | <input type="checkbox"/> Westwind Meadows |
| <input type="checkbox"/> Memorial (Mirror Lake) Park | <input type="checkbox"/> Woodbrook |

25. What feedback would you like to offer on the park you selected? _____

City of Dover Recreational Needs Assessment

Now tell us a little about yourself and family.

Having a cross section of individuals and families from all areas of Dover will help to ensure that survey results tell the story of our community. Having community wide input will give us direction in planning manageable growth.

26. Where do you live?* *Please circle you answer.*

*(*mandatory response is needed to validate survey)*

City of Dover Residents

Acorn Farms
Baltray
Barrister Place
Bay Tree
Bicentennial Village
Blue Hen Apartments
Brandywine Apartments
Cannon Mill
Capital Green
Cedar Chase Apartments
Chatham Court Apartments
Clearfield Apartments
Clearview Meadow
Country Club Apartments
Country Village Apartments
Cranberry Run
Crossgates
Dover Downs
Dover East Mobile Home Park
East Lake Gardens
Eden Hill Farm
Edgehill
Emerald Pointe
English Village
Fairview
Farthing Woods
Four Seasons
Fox Hall
Fox Hall West
Fox Hall West Addition
Fox Meadows
Governors Square Apartments
Greens of Dover
Hampton Square

Heatherfield
Heatherfield East
Hidden Creek
Hidden Oaks
Independence Village
Kings Cliff Mobile Home Park
Lake Club Apartments
Lexington Glen
Liberty Court
Lincoln Park
Lynnhaven
Mallard Pond
Manchester Square
Maple Glen
Mapleton Square
Marsh Creek
Mayfair
Meadows at Dover
Millcreek
Morris Estate
Morris Estates 2
Northwest Dover Heights
Nottingham Meadows
Oak Shadows
Oakmont park
Oakridge
Patriot Village
Persimmon Park Place
Pine Grove Apartments
Pine Grove Farms South
Presidential Courts
Retreat
River Chase Apartments
Riverside Mobile Home Park

Schoolview
Seskinore
Sherwood
Sherwood 2
Silver Lake Overlook
Silver Lake Townhouses
Silver Mill Apartments
Simon Circle
Somerset Park
Stonebrook East
Stonebrook West
Stoney Creek
Stover
The Beeches
The Hamlet
Towne Point
Towne Point Apartments
Turnberry
University Courtyard
Village of Westover
Vondaway
Walker Woods
Wedgewood
Westfield
Westminster
White Oak Farms
White Oak Farms Apartments
Wild Meadows
Woodbrook
Woodcrest
Woodmill Apartments
Other not listed: _____

Non-City of Dover Residents

Camden-Wyoming
Carlisle Village
Cheswold
Felton-Harrington
Hartly-Marydel

Little Creek-Leipsic
Magnolia
Rodney Village
Royal Grant
Other not listed: _____

City of Dover Recreational Needs Assessment

27. How many are in your household?

- | | |
|--------------------------------|-------------------------------------|
| <input type="checkbox"/> 1 – 3 | <input type="checkbox"/> 8 – 12 |
| <input type="checkbox"/> 4 - 7 | <input type="checkbox"/> 13 or more |

28. What is your HOUSEHOLD income?

- | | |
|--|---|
| <input type="checkbox"/> Less than \$10,000 | <input type="checkbox"/> \$50,000 - \$74,999 |
| <input type="checkbox"/> \$10,000 - \$14,999 | <input type="checkbox"/> \$75,000 - \$149,999 |
| <input type="checkbox"/> \$15,000 - \$24,999 | <input type="checkbox"/> \$150,00 - \$199,999 |
| <input type="checkbox"/> \$25,000 - \$34,999 | <input type="checkbox"/> \$200,000 or more |
| <input type="checkbox"/> \$35,000 - \$49,999 | |

29. What is your age?

- | | |
|----------------------------------|-------------------------------------|
| <input type="checkbox"/> 18 – 34 | <input type="checkbox"/> 55 -75 |
| <input type="checkbox"/> 35 - 54 | <input type="checkbox"/> 75 - older |

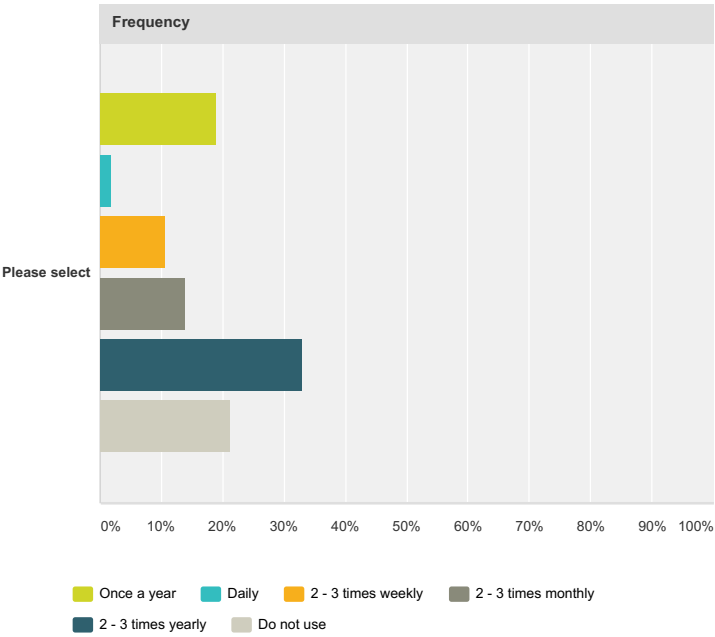
30. What is your gender? ☐ Female ☐ Male

31. What is your race? _____

City of Dover Recreational Needs Assessment

Q1 How often do you/household members participate in a City of Dover activity, league, trip, or program?

Answered: 478 Skipped: 28

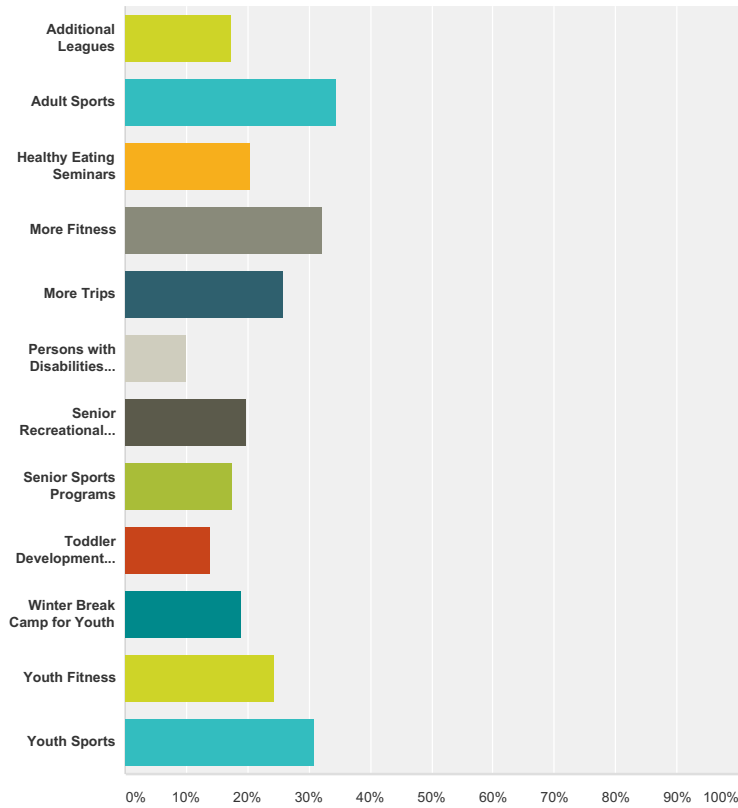


Frequency							
	Once a year	Daily	2 - 3 times weekly	2 - 3 times monthly	2 - 3 times yearly	Do not use	Total
Please select	19.04%	1.88%	10.67%	14.02%	33.05%	21.34%	
	91	9	51	67	158	102	478

City of Dover Recreational Needs Assessment

Q2 What programs are you interested in seeing added to the programming schedule?

Answered: 446 Skipped: 60

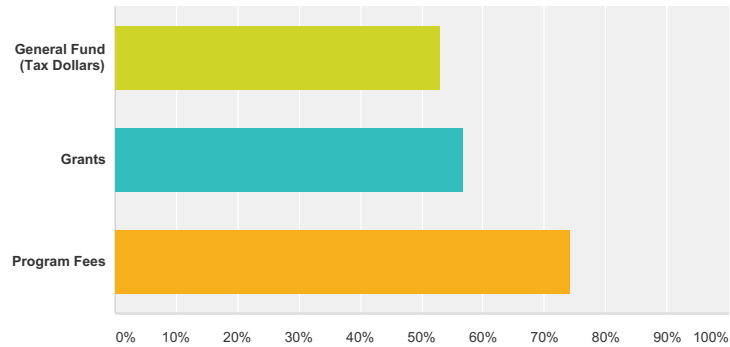


Answer Choices	Responses
Additional Leagues	17.26% 77
Adult Sports	34.53% 154
Healthy Eating Seminars	20.40% 91
More Fitness	32.06% 143
More Trips	25.78% 115
Persons with Disabilities Programs	10.09% 45
Senior Recreational Programs	19.73% 88
Senior Sports Programs	17.49% 78
Toddler Development Programs	13.90% 62
Winter Break Camp for Youth	19.06% 85
Youth Fitness	24.44% 109
Youth Sports	30.94% 138
Total Respondents: 446	

City of Dover Recreational Needs Assessment

Q3 How do you feel recreational programs should be funded?

Answered: 477 Skipped: 29

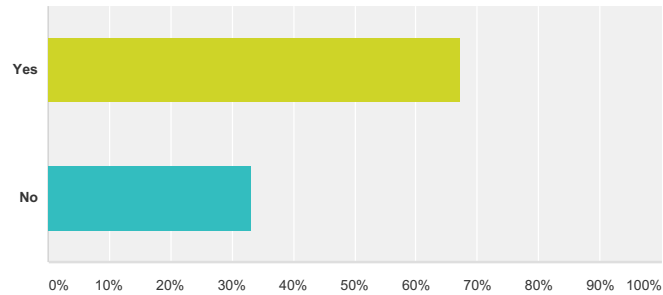


Answer Choices	Responses	
General Fund (Tax Dollars)	53.04%	253
Grants	56.81%	271
Program Fees	74.42%	355
Total Respondents: 477		

City of Dover Recreational Needs Assessment

Q4 Should City Residents (within the tax district) pay a reduced fee verses non-city residents?

Answered: 488 Skipped: 18

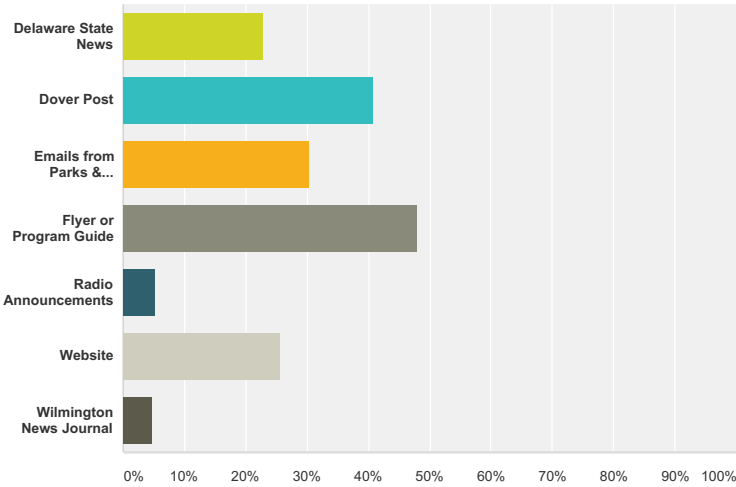


Answer Choices	Responses	
Yes	67.21%	328
No	33.20%	162
Total Respondents: 488		

City of Dover Recreational Needs Assessment

Q5 How do you typically hear about our programs?

Answered: 452 Skipped: 54

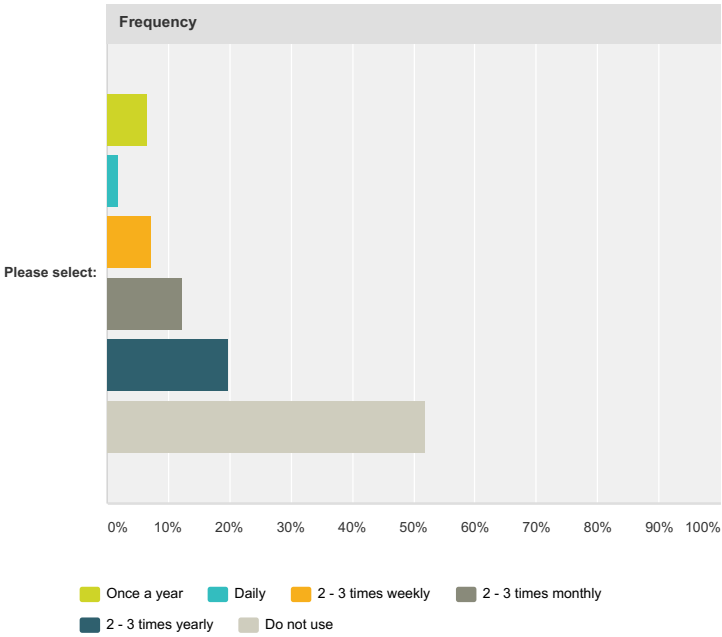


Answer Choices	Responses	
Delaware State News	23.01%	104
Dover Post	40.93%	185
Emails from Parks & Recreation	30.53%	138
Flyer or Program Guide	48.01%	217
Radio Announcements	5.31%	24
Website	25.66%	116
Wilmington News Journal	4.87%	22
Total Respondents: 452		

City of Dover Recreational Needs Assessment

Q6 How often do you/household members visit Dover Park?

Answered: 448 Skipped: 58

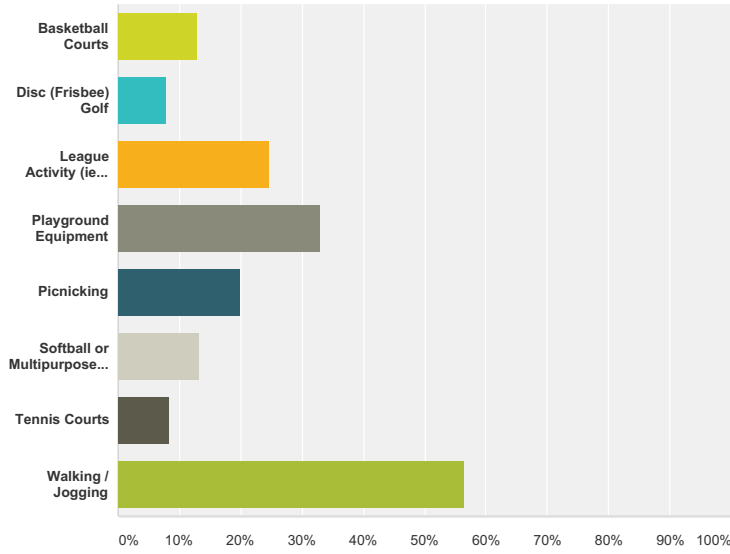


Frequency							
	Once a year	Daily	2 - 3 times weekly	2 - 3 times monthly	2 - 3 times yearly	Do not use	Total
Please select:	6.70% 30	1.79% 8	7.37% 33	12.28% 55	19.87% 89	52.01% 233	448

City of Dover Recreational Needs Assessment

Q7 What is the nature of your Dover Park visit?

Answered: 239 Skipped: 267

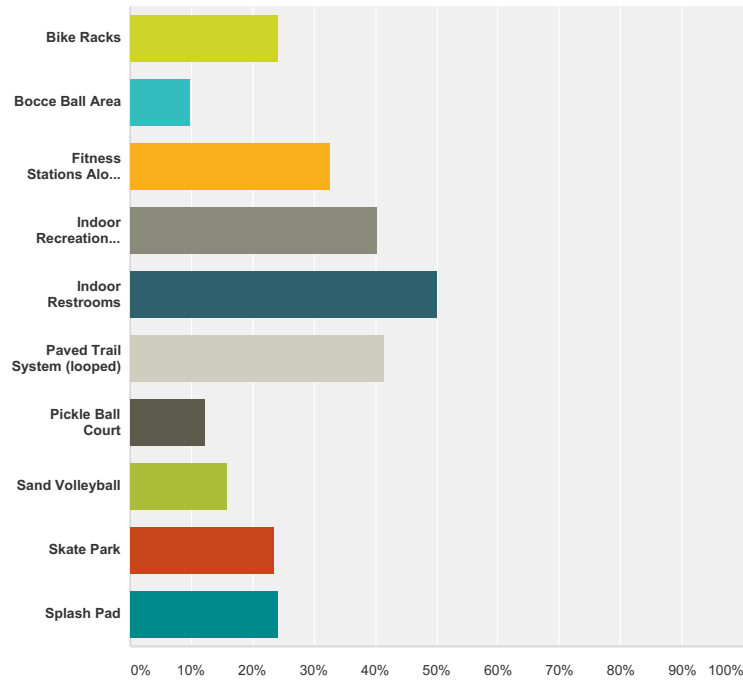


Answer Choices	Responses	
Basketball Courts	12.97%	31
Disc (Frisbee) Golf	7.95%	19
League Activity (ie: Softball, Field Hockey, etc.)	24.69%	59
Playground Equipment	33.05%	79
Picnicking	20.08%	48
Softball or Multipurpose field	13.39%	32
Tennis Courts	8.37%	20
Walking / Jogging	56.49%	135
Total Respondents: 239		

City of Dover Recreational Needs Assessment

Q8 What would you like to see at Dover Park?

Answered: 323 Skipped: 183

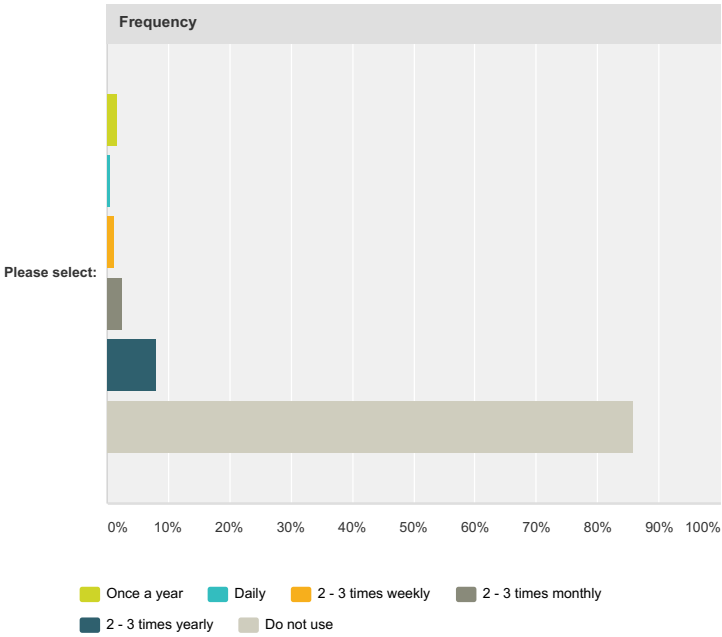


Answer Choices	Responses	
Bike Racks	24.15%	78
Bocce Ball Area	9.91%	32
Fitness Stations Along Trail	32.82%	106
Indoor Recreation Center	40.25%	130
Indoor Restrooms	50.15%	162
Paved Trail System (looped)	41.49%	134
Pickle Ball Court	12.38%	40
Sand Volleyball	15.79%	51
Skate Park	23.53%	76
Splash Pad	24.15%	78
Total Respondents: 323		

City of Dover Recreational Needs Assessment

Q9 How often do you/household members visit New Street park?

Answered: 443 Skipped: 63

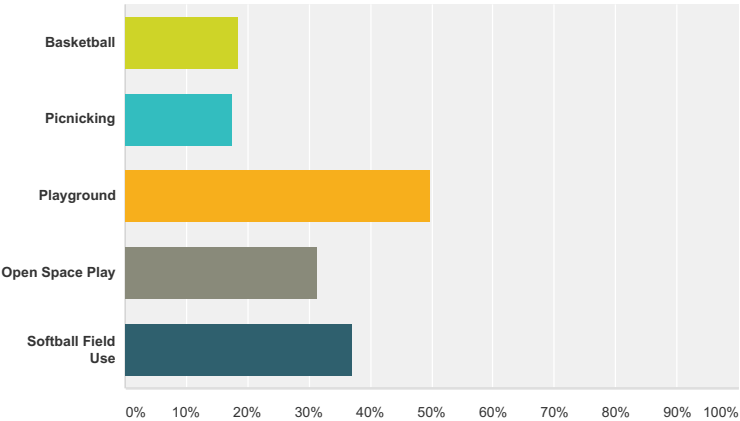


Frequency							
	Once a year	Daily	2 - 3 times weekly	2 - 3 times monthly	2 - 3 times yearly	Do not use	Total
Please select:	1.58% 7	0.68% 3	1.35% 6	2.48% 11	8.13% 36	85.78% 380	443

City of Dover Recreational Needs Assessment

Q10 What is the nature of your New Street Park visit?

Answered: 86 Skipped: 420

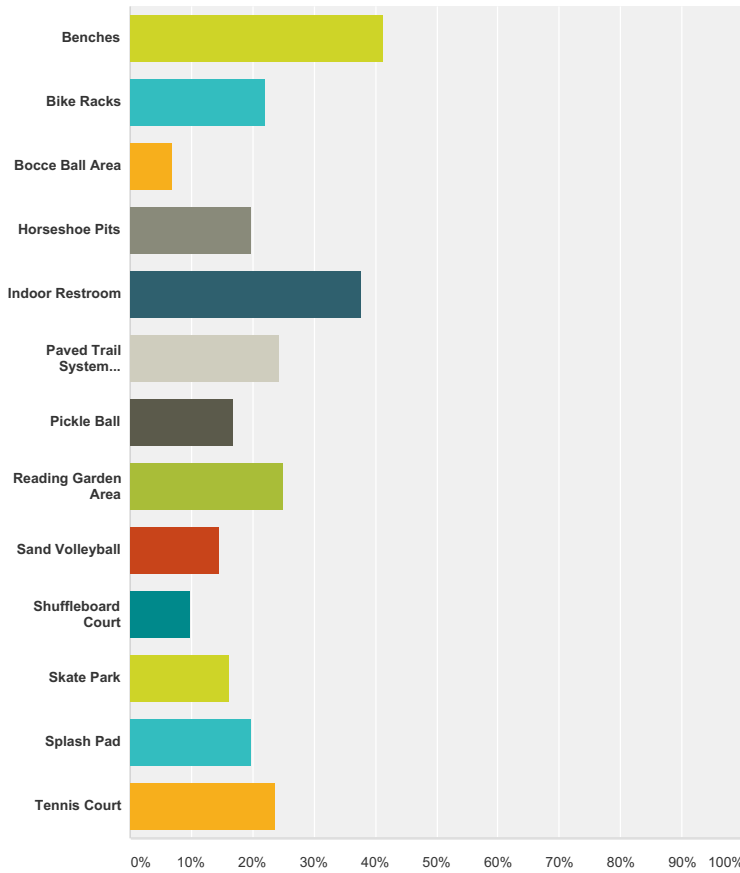


Answer Choices	Responses	
Basketball	18.60%	16
Picnicking	17.44%	15
Playground	50.00%	43
Open Space Play	31.40%	27
Softball Field Use	37.21%	32
Total Respondents: 86		

City of Dover Recreational Needs Assessment

Q11 What would you like to see at New Street Park?

Answered: 172 Skipped: 334

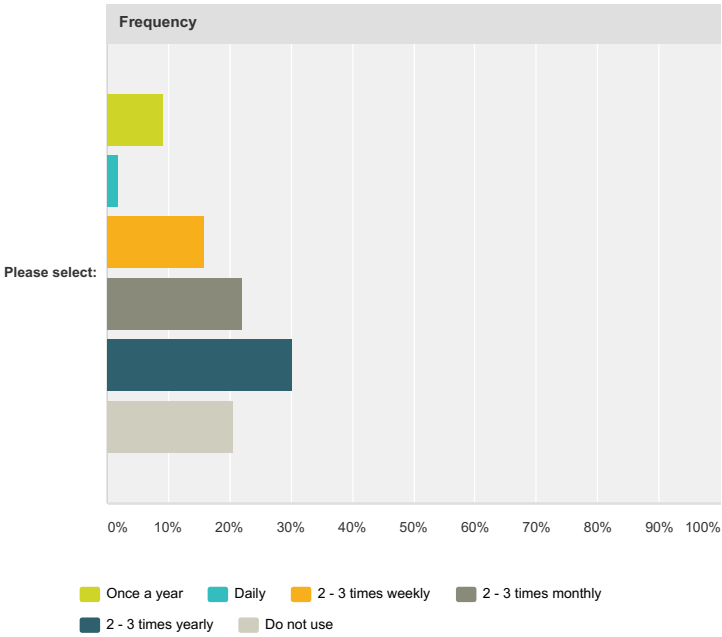


Answer Choices	Responses	
Benches	41.28%	71
Bike Racks	22.09%	38
Bocce Ball Area	6.98%	12
Horseshoe Pits	19.77%	34
Indoor Restroom	37.79%	65
Paved Trail System w/Fitness Stations	24.42%	42
Pickle Ball	16.86%	29
Reading Garden Area	25.00%	43
Sand Volleyball	14.53%	25
Shuffleboard Court	9.88%	17
Skate Park	16.28%	28
Splash Pad	19.77%	34
Tennis Court	23.84%	41
Total Respondents: 172		

City of Dover Recreational Needs Assessment

Q12 How often do you/household members visit Schutte Park?

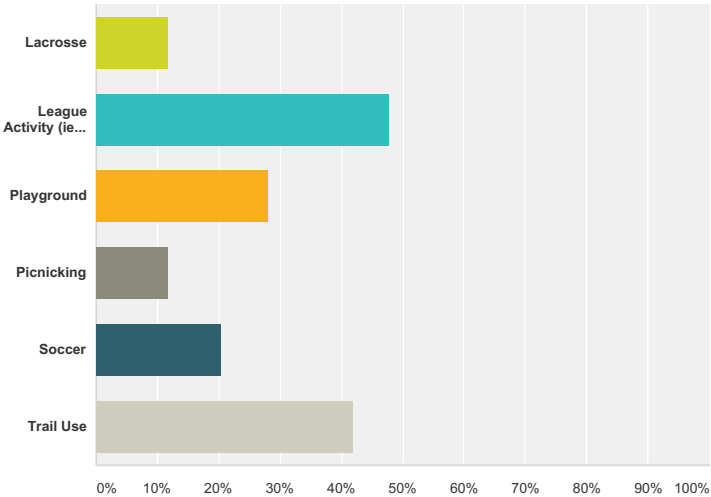
Answered: 434 Skipped: 72



Frequency							
	Once a year	Daily	2 - 3 times weekly	2 - 3 times monthly	2 - 3 times yearly	Do not use	Total
Please select:	9.22%	1.84%	15.90%	22.12%	30.18%	20.74%	
	40	8	69	96	131	90	434

Q13 What is the nature of your Schutte Park visit?

Answered: 329 Skipped: 177

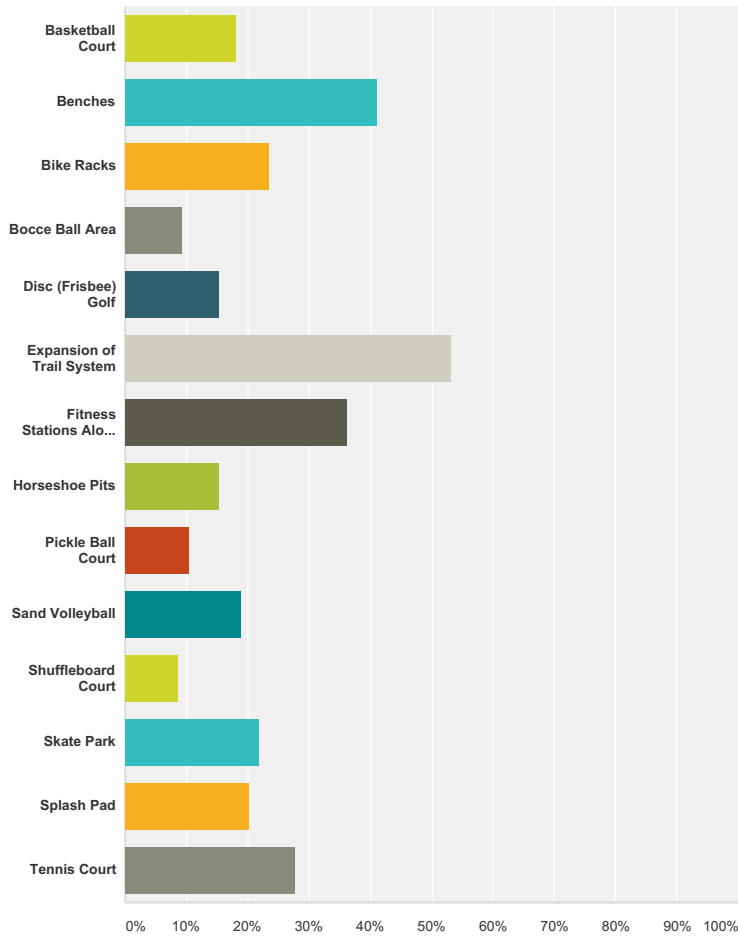


Answer Choices	Responses	
Lacrosse	11.85%	39
League Activity (ie: Softball, Field Hockey, etc)	47.72%	157
Playground	28.27%	93
Picnicking	11.85%	39
Soccer	20.36%	67
Trail Use	41.95%	138
Total Respondents: 329		

City of Dover Recreational Needs Assessment

Q14 What would you like to see at Schutte Park?

Answered: 364 Skipped: 142

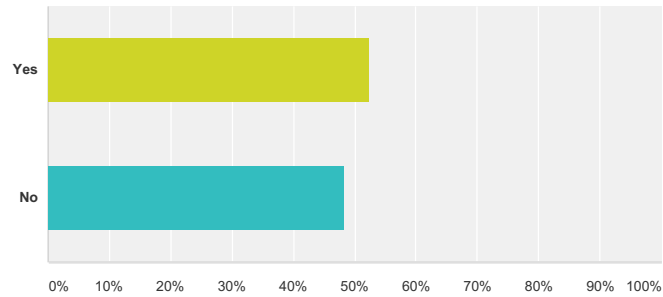


Answer Choices	Responses
Basketball Court	18.13% 66
Benches	41.21% 150
Bike Racks	23.63% 86
Bocce Ball Area	9.34% 34
Disc (Frisbee) Golf	15.38% 56
Expansion of Trail System	53.30% 194
Fitness Stations Along Trail	36.26% 132
Horseshoe Pits	15.38% 56
Pickle Ball Court	10.44% 38
Sand Volleyball	18.96% 69
Shuffleboard Court	8.79% 32
Skate Park	21.98% 80
Splash Pad	20.33% 74
Tennis Court	27.75% 101
Total Respondents: 364	

City of Dover Recreational Needs Assessment

Q15 Do you visit the John W. Pitts Recreation Center (JWP)?

Answered: 422 Skipped: 84

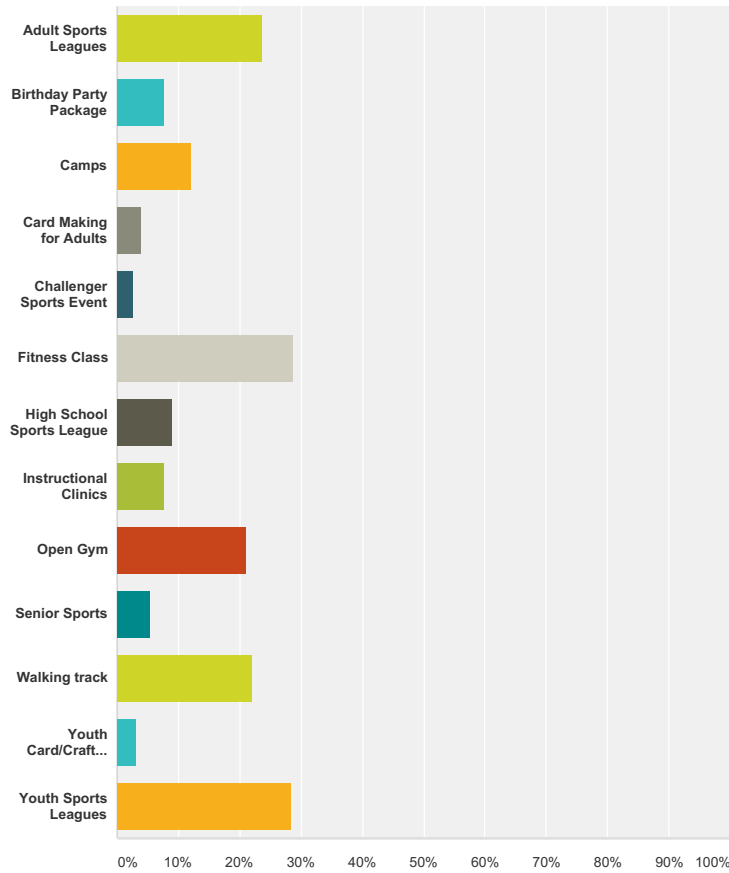


Answer Choices	Responses	
Yes	52.37%	221
No	48.34%	204
Total Respondents: 422		

City of Dover Recreational Needs Assessment

Q16 If Yes, to visiting the JWP, what is the nature of your visit?

Answered: 222 Skipped: 284

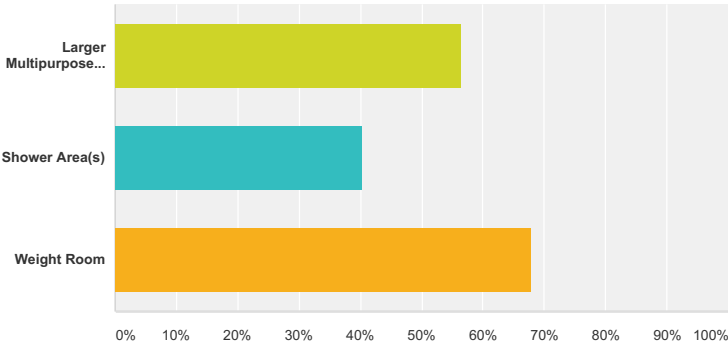


Answer Choices	Responses
Adult Sports Leagues	23.87% 53
Birthday Party Package	7.66% 17
Camps	12.16% 27
Card Making for Adults	4.05% 9
Challenger Sports Event	2.70% 6
Fitness Class	28.83% 64
High School Sports League	9.01% 20
Instructional Clinics	7.66% 17
Open Gym	21.17% 47
Senior Sports	5.41% 12
Walking track	22.07% 49
Youth Card/Craft Making	3.15% 7
Youth Sports Leagues	28.38% 63
Total Respondents: 222	

City of Dover Recreational Needs Assessment

Q17 What would you like to see added to JWP?

Answered: 196 Skipped: 310

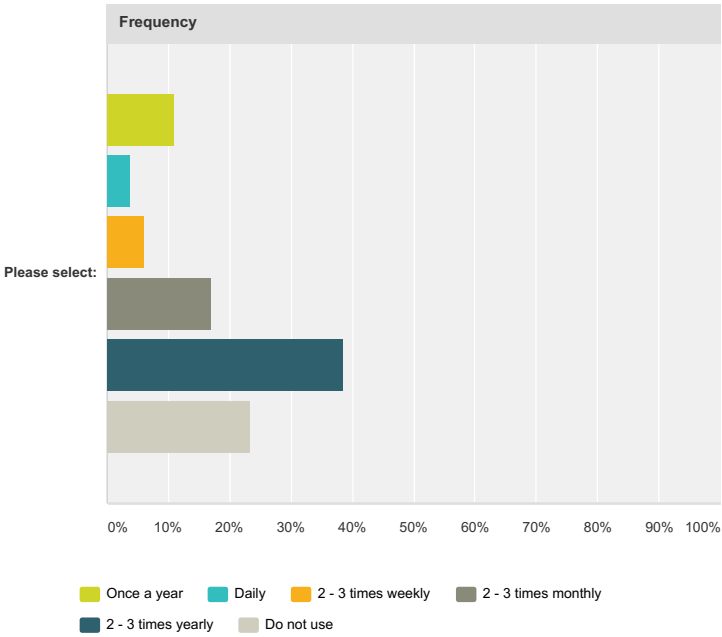


Answer Choices	Responses	
Larger Multipurpose Room(s)	56.63%	111
Shower Area(s)	40.31%	79
Weight Room	67.86%	133
Total Respondents: 196		

City of Dover Recreational Needs Assessment

Q18 How often do you/members of your household visit Silver Lake Park?

Answered: 432 Skipped: 74

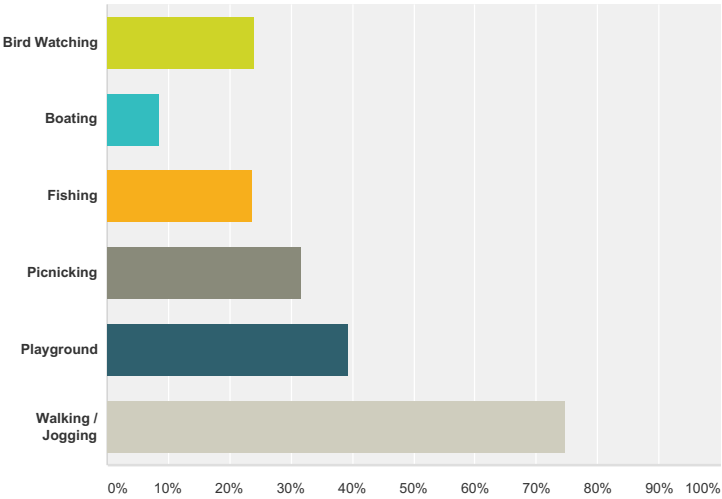


Frequency							
	Once a year	Daily	2 - 3 times weekly	2 - 3 times monthly	2 - 3 times yearly	Do not use	Total
Please select:	11.11% 48	3.70% 16	6.02% 26	17.13% 74	38.66% 167	23.38% 101	432

City of Dover Recreational Needs Assessment

Q19 What is the nature of your Silver Lake visit?

Answered: 337 Skipped: 169

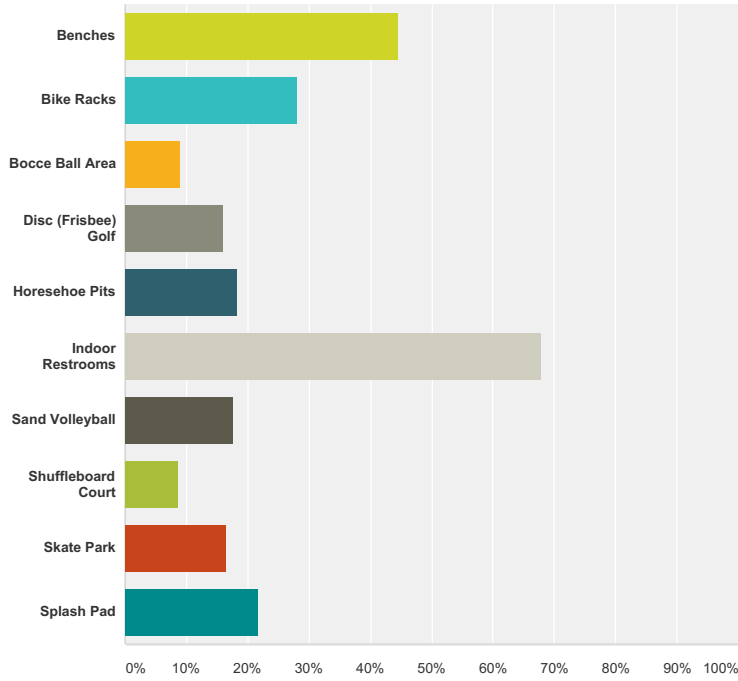


Answer Choices	Responses	
Bird Watching	24.04%	81
Boating	8.61%	29
Fishing	23.74%	80
Picnicking	31.75%	107
Playground	39.47%	133
Walking / Jogging	74.78%	252
Total Respondents: 337		

City of Dover Recreational Needs Assessment

Q20 What would you like to see at Silver Lake?

Answered: 298 Skipped: 208

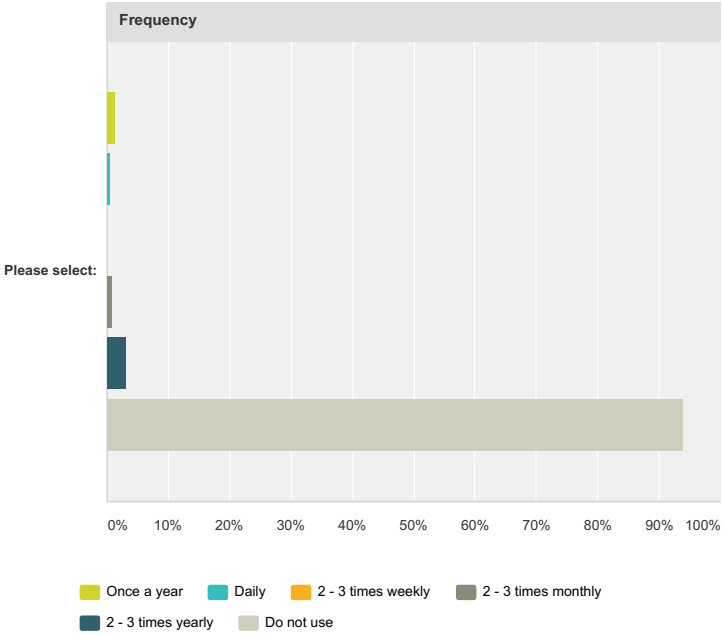


Answer Choices	Responses	
Benches	44.63%	133
Bike Racks	28.19%	84
Bocce Ball Area	9.06%	27
Disc (Frisbee) Golf	16.11%	48
Horsehoe Pits	18.46%	55
Indoor Restrooms	67.79%	202
Sand Volleyball	17.79%	53
Shuffleboard Court	8.72%	26
Skate Park	16.44%	49
Splash Pad	21.81%	65
Total Respondents: 298		

City of Dover Recreational Needs Assessment

Q21 How often do you/household members visit Williams Park?

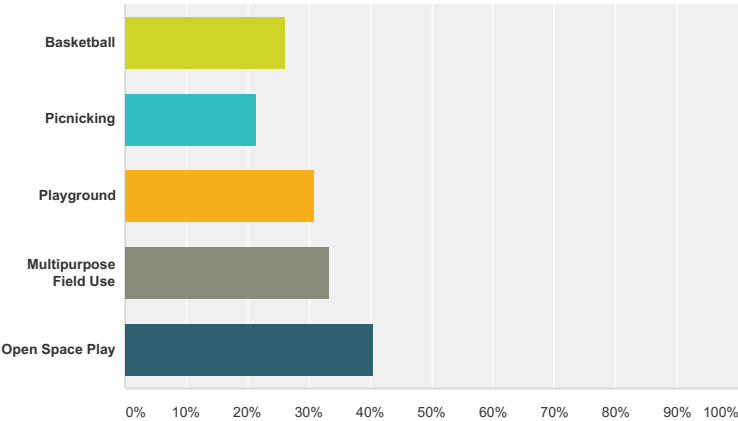
Answered: 428 Skipped: 78



Frequency							
	Once a year	Daily	2 - 3 times weekly	2 - 3 times monthly	2 - 3 times yearly	Do not use	Total
Please select:	1.40% 6	0.70% 3	0.00% 0	0.93% 4	3.04% 13	93.93% 402	428

Q22 What is the nature of your Williams Park visit?

Answered: 42 Skipped: 464

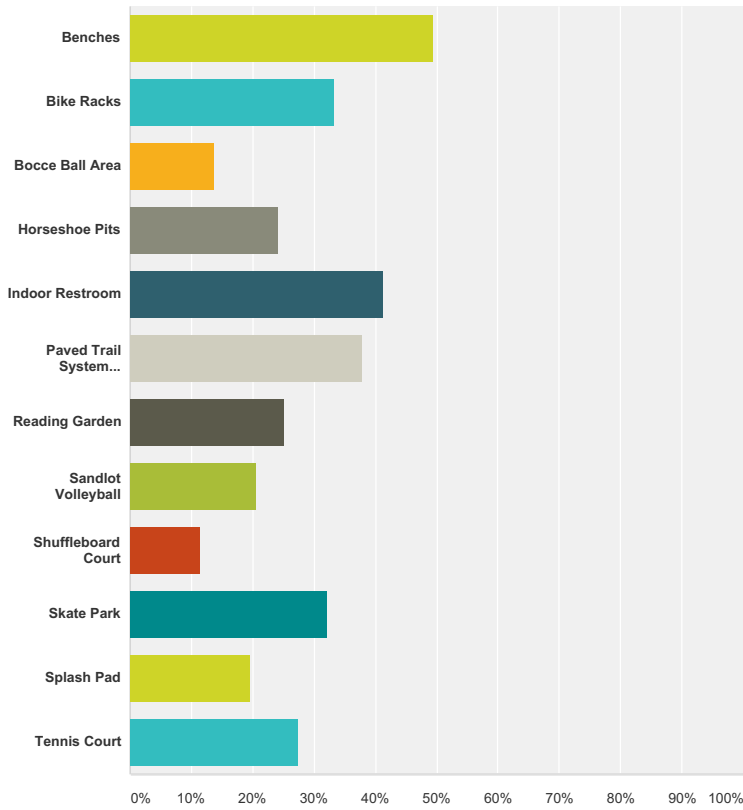


Answer Choices	Responses	
Basketball	26.19%	11
Picnicking	21.43%	9
Playground	30.95%	13
Multipurpose Field Use	33.33%	14
Open Space Play	40.48%	17
Total Respondents: 42		

City of Dover Recreational Needs Assessment

Q23 What would you like to see at Williams Park?

Answered: 87 Skipped: 419

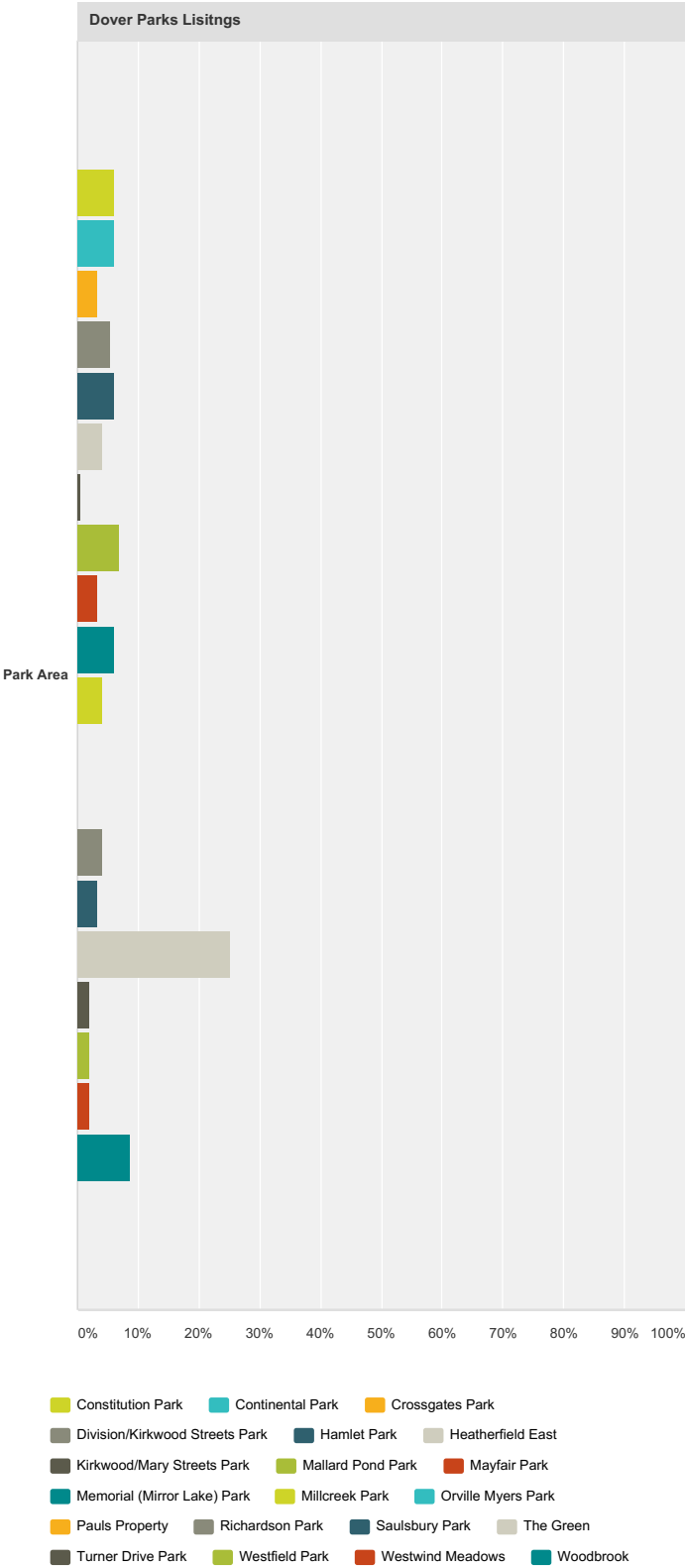


Answer Choices	Responses	
Benches	49.43%	43
Bike Racks	33.33%	29
Bocce Ball Area	13.79%	12
Horseshoe Pits	24.14%	21
Indoor Restroom	41.38%	36
Paved Trail System w/Fitness Stations	37.93%	33
Reading Garden	25.29%	22
Sandlot Volleyball	20.69%	18
Shuffleboard Court	11.49%	10
Skate Park	32.18%	28
Splash Pad	19.54%	17
Tennis Court	27.59%	24
Total Respondents: 87		

City of Dover Recreational Needs Assessment

Q24 Where is your neighborhood park located that you are providing feedback?

Answered: 147 Skipped: 359



City of Dover Recreational Needs Assessment

	Constitution Park	Continental Park	Crossgates Park	Division/Kirkwood Streets Park	Hamlet Park	Heatherfield East	Kirkwood/Mary Streets Park	Mallard Pond Park	Mayfair Park	Memorial (Mirror Lake) Park	Millcreek Park	Orville Myers Park	Pauls Property	Richardson Park	Sa Pa
Park Area	6.12% 9	6.12% 9	3.40% 5	5.44% 8	6.12% 9	4.08% 6	0.68% 1	6.80% 10	3.40% 5	6.12% 9	4.08% 6	0.00% 0	0.00% 0	4.08% 6	

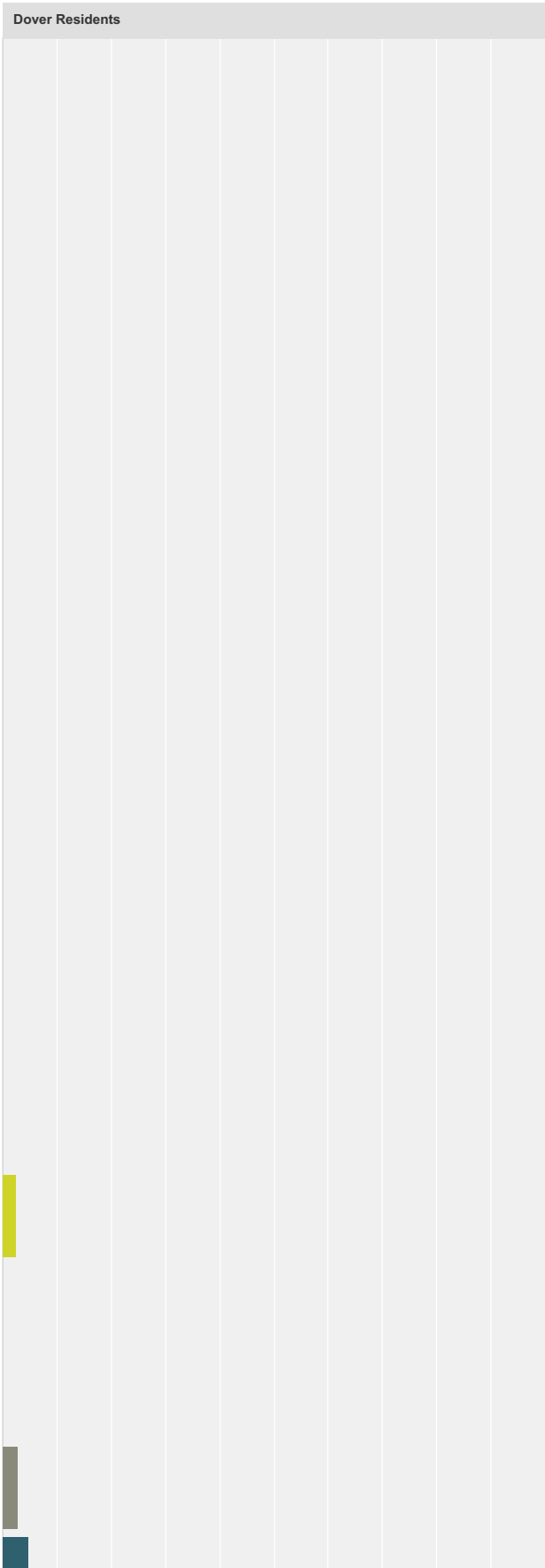
City of Dover Recreational Needs Assessment

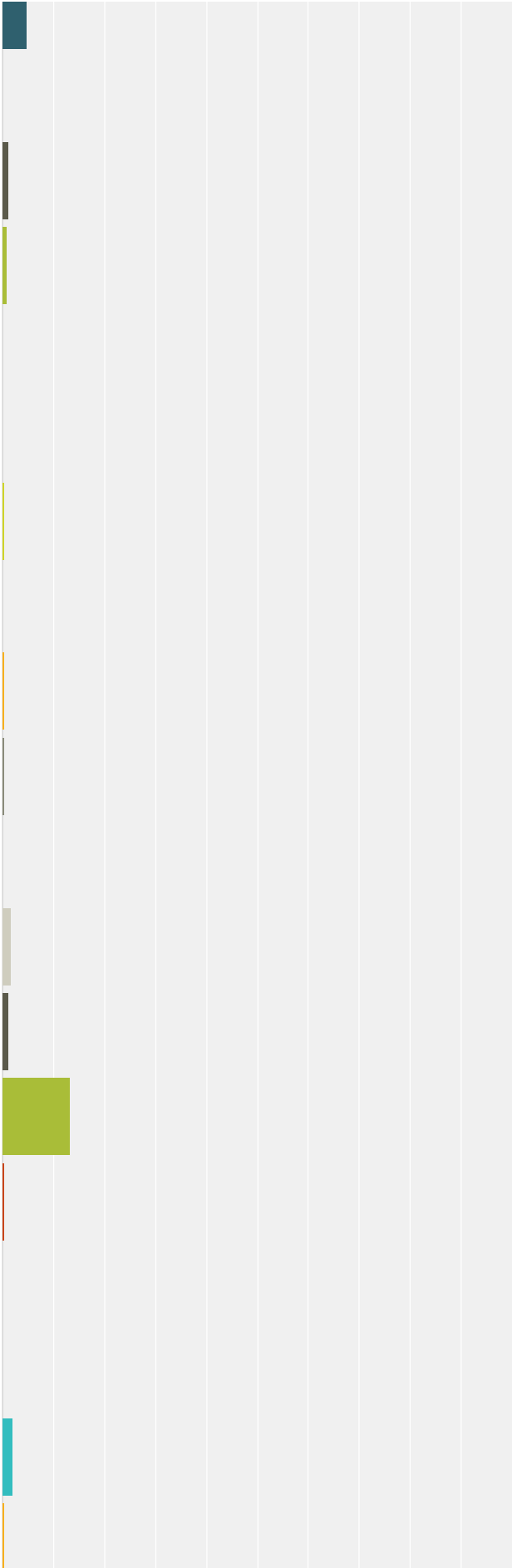
Q25 What feedback would like to offer on the park you selected?

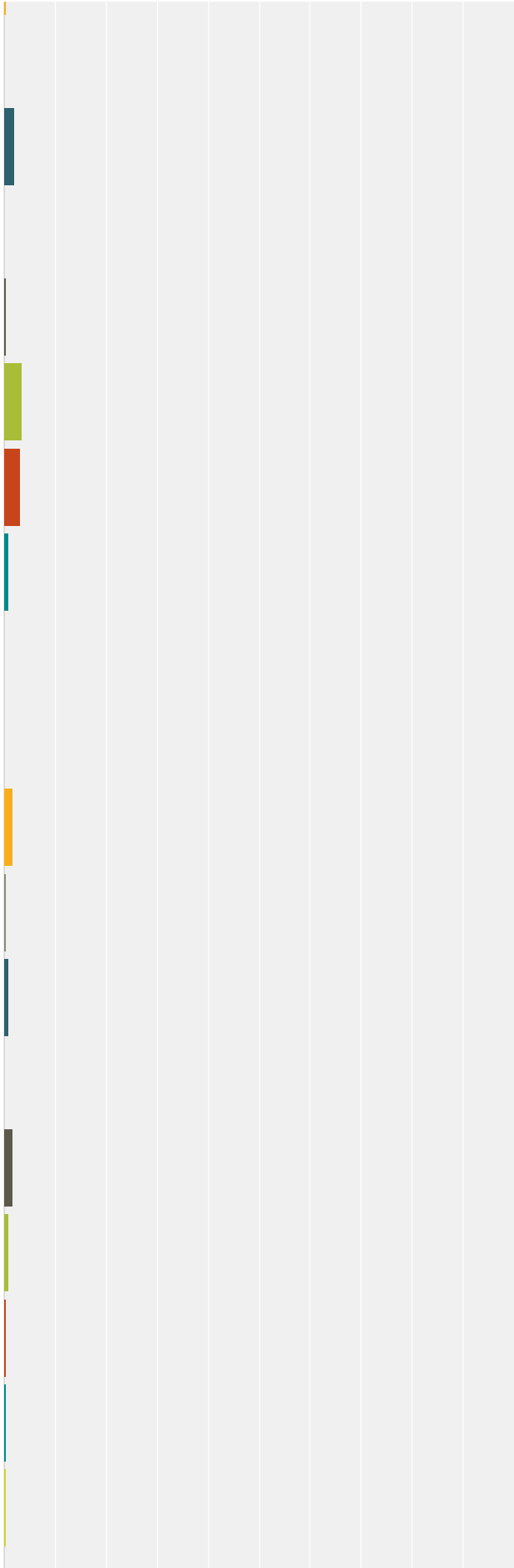
Answered: 89 Skipped: 417

Q26 Where do you live?

Answered: 403 Skipped: 103

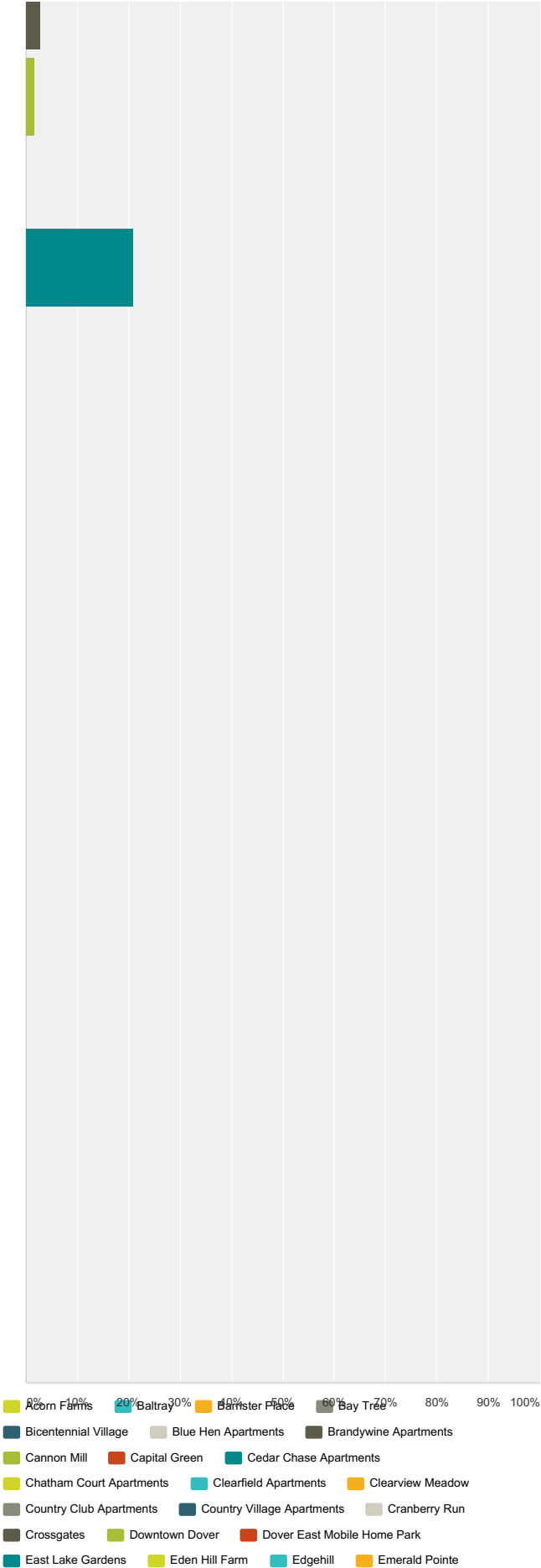






Please use a
drop down bo...

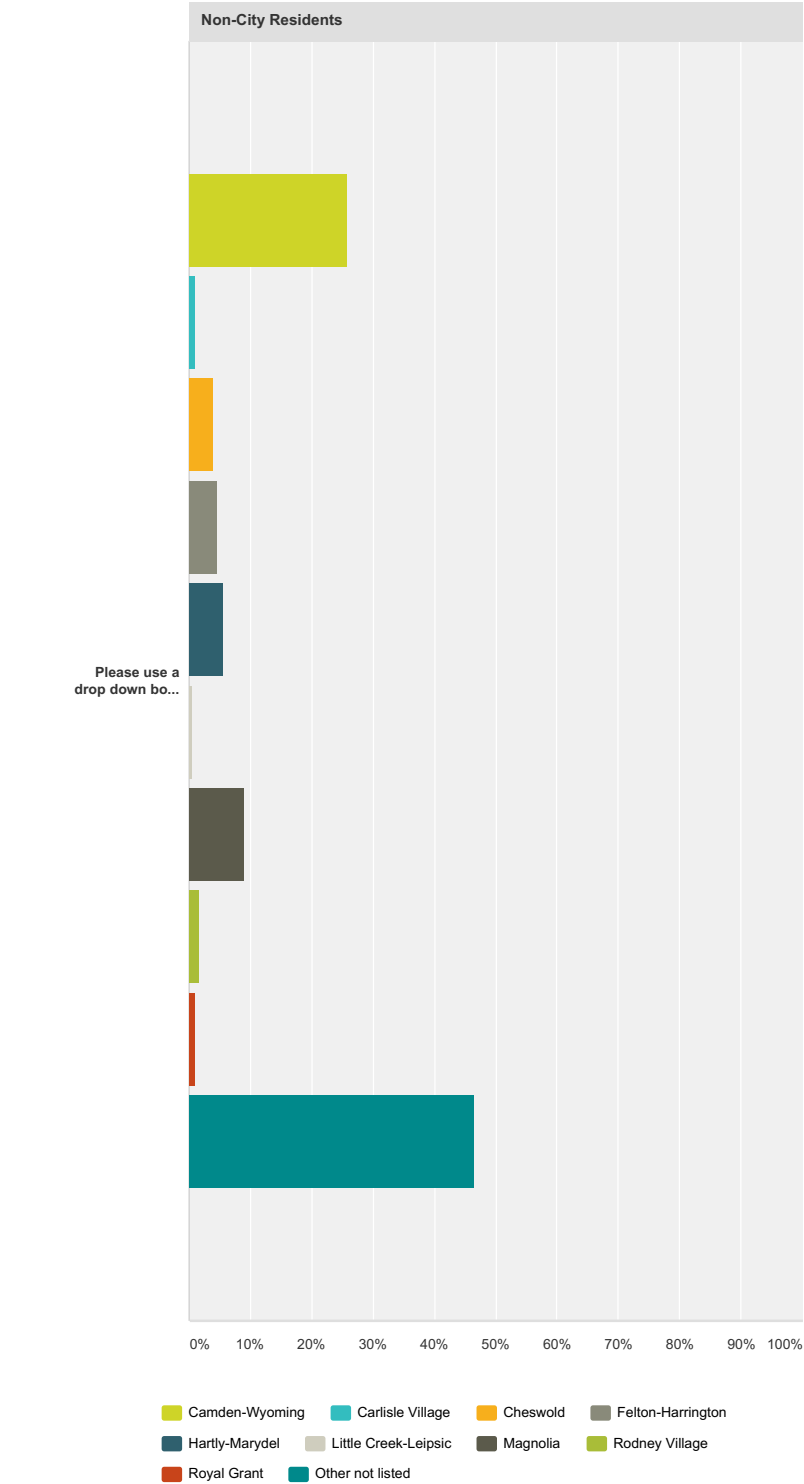
City of Dover Recreational Needs Assessment



City of Dover Recreational Needs Assessment

English Village	Fairview	Farthing Woods	Four Seasons	Fox Hall
Fox Hall West	Fox Hall West Addition	Fox Meadows		
Governors Square Apartments	Greens of Dover	Hampton Square		
Heatherfield	Heatherfield East	Hidden Creek	Hidden Oaks	
Independence Village	Kings Cliff Mobile Home Park	Lake Club Apartments		
Lexington Glen	Liberty Court	Lincoln Park	Lynnhaven	
Mallard Pond	Manchester Square	Maple Glen	Mapleton Square	
Marsh Creek	Mayfair	Meadows at Dover	Millcreek	Morris Estate
Morris Estates 2	Northwest Dover Heights	Nottingham Meadows		
Oak Shadows	Oakmont park	Oakridge	Patriot Village	
Persimmon Park Place	Pine Grove Apartments	Pine Grove Farms South		
Presidential Courts	Retreat	River Chase Apartments		
Riverside Mobile Home Park	Schoolview	Seskinore	Sherwood	
Sherwood 2	Silver Lake Overlook	Silver Lake Townhouses		
Silver Mill Apartments	Simon Circle	Somerset Park	Stonebrook East	
Stonebrook West	Stoney Creek	Stover	The Beeches	The Hamlet
Towne Point	Towne Point Apartments	Turnberry	University Courtyard	
Village of Westover	Vondaway	Walker Woods	Wedgewood	
Westfield	Westminster	White Oak Farms	White Oak Farms Apartments	
Wild Meadows	Woodbrook	Woodcrest	Woodmill Apartments	
Other not listed				

City of Dover Recreational Needs Assessment



Dover Residents															
	Acorn Farms	Baltray	Barrister Place	Bay Tree	Bicentennial Village	Blue Hen Apartments	Brandywine Apartments	Cannon Mill	Capital Green	Cedar Chase Apartments	Chatham Court Apartments	Clearfield Apartments	Clearview Meadow	Country Club Apartments	Country Village Apartments
Please use a drop down box to select where you live.	2.42% 6	0.00% 0	0.00% 0	2.82% 7	4.84% 12	0.00% 0	1.21% 3	0.81% 2	0.00% 0	0.00% 0	0.40% 1	0.00% 0	0.40% 1	0.40% 1	0.00% 0

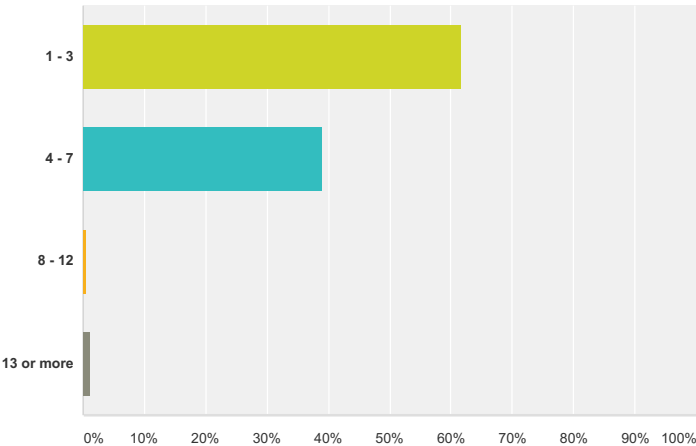
City of Dover Recreational Needs Assessment

Non-City Residents											
	Camden-Wyoming	Carlisle Village	Cheswold	Felton-Harrington	Hartly-Marydel	Little Creek-Leipsic	Magnolia	Rodney Village	Royal Grant	Other not listed	Total
Please use a drop down box to select where you live.	25.84% 46	1.12% 2	3.93% 7	4.49% 8	5.62% 10	0.56% 1	8.99% 16	1.69% 3	1.12% 2	46.63% 83	178

City of Dover Recreational Needs Assessment

Q27 How many are in your household?

Answered: 413 Skipped: 93

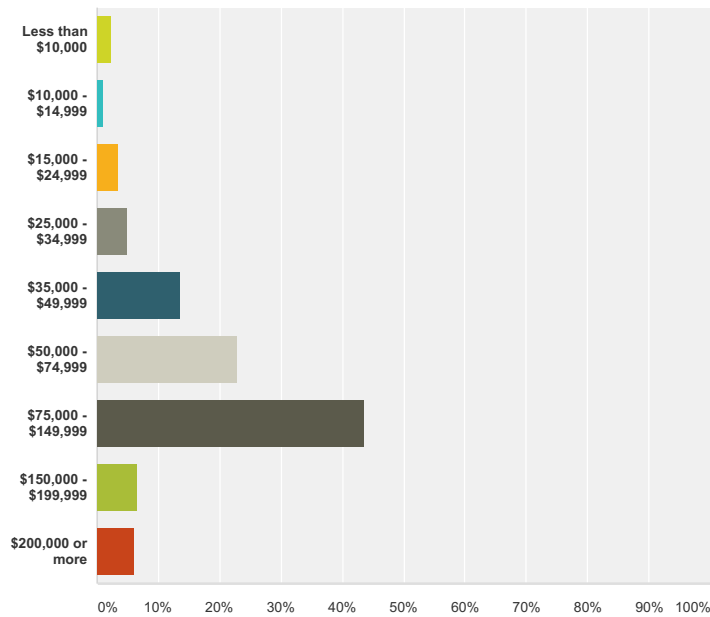


Answer Choices	Responses	
1 - 3	61.74%	255
4 - 7	38.98%	161
8 - 12	0.73%	3
13 or more	1.21%	5
Total Respondents: 413		

City of Dover Recreational Needs Assessment

Q28 What is your HOUSEHOLD income?

Answered: 362 Skipped: 144

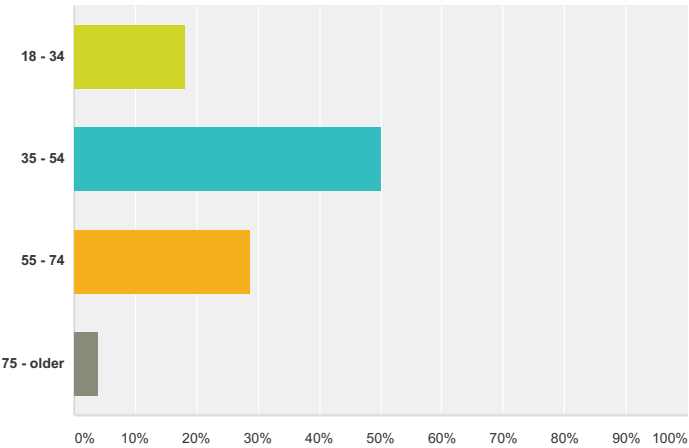


Answer Choices	Responses	
Less than \$10,000	2.21%	8
\$10,000 - \$14,999	1.10%	4
\$15,000 - \$24,999	3.59%	13
\$25,000 - \$34,999	4.97%	18
\$35,000 - \$49,999	13.54%	49
\$50,000 - \$74,999	22.93%	83
\$75,000 - \$149,999	43.65%	158
\$150,000 - \$199,999	6.63%	24
\$200,000 or more	6.08%	22
Total Respondents: 362		

City of Dover Recreational Needs Assessment

Q29 What is your age?

Answered: 403 Skipped: 103

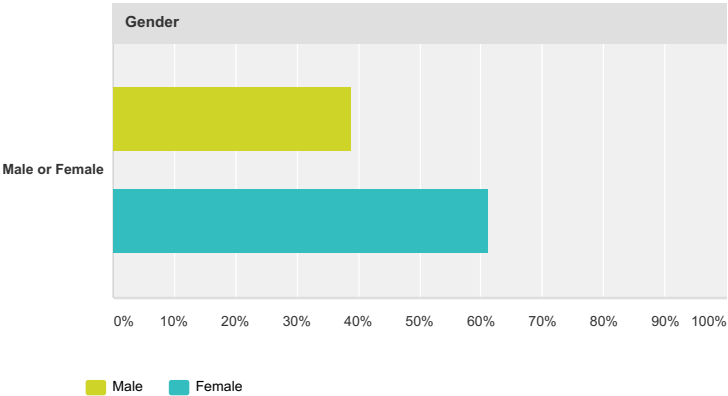


Answer Choices	Responses	
18 - 34	18.11%	73
35 - 54	50.12%	202
55 - 74	28.78%	116
75 - older	3.97%	16
Total Respondents: 403		

City of Dover Recreational Needs Assessment

Q30 What is your gender?

Answered: 412 Skipped: 94



Gender			
	Male	Female	Total
Male or Female	38.83% 160	61.17% 252	412

City of Dover Recreational Needs Assessment

Q31 What is your race?

Answered: 419 Skipped: 87